



## **FUELPORT FULL-SIZE FUELPORT**



## **Last Revision Date: March 8, 2016**

For the most up-to-date information for this product and others, please contact Simplex, Inc. at (800) 637-8603 or visit us on the web at <http://www.simplexdirect.com>.

# Table of Contents

<b>1 Warnings and Cautions .....</b>	<b>1</b>
Safety information symbols	1
Cautions	1
<b>2 Nameplates and Placards .....</b>	<b>3</b>
<b>3 Description and Specification .....</b>	<b>4</b>
<b>4 Unpacking .....</b>	<b>9</b>
Included Components and Parts	9
Primary Inspection	9
<b>5 Installation .....</b>	<b>10</b>
Welding FuelPort to Tank	10
Attaching FuelPort to Post	10
Attaching FuelPort to Base	11
Mounting FuelPort Recessed into Wall	11
Mounting Full-Size FuelPort	11
<b>6 Operating Instructions .....</b>	<b>12</b>
<b>APPENDIX A — PRODUCT WARRANTY .....</b>	<b>13</b>

# Table of Figures

Specifications.....	5
FuelPort Dimensions .....	6
Full-Size FuelPort Dimensions.....	7
Recessed-Mount FuelPort Dimensions.....	8
Weld Brackets.....	10
FuelPort Post .....	10
FuelPort Base.....	10

# 1 WARNINGS AND CAUTIONS

## SAFETY INFORMATION SYMBOLS

The following images indicate important safety information:



This General warning symbol points out important information that, if not followed, could endanger personal safety and/or property.



This Explosion warning symbol points out potential explosion hazards.



This Fire warning symbol points out potential fire hazards.



This Electrical warning symbol points out potential electrical shock hazards.

## CAUTIONS



- Improper operation of this equipment such as neglecting its maintenance or being careless can cause possible injury or death. Permit only responsible and capable persons to install, operate, and/or maintain this equipment.
- Potentially lethal voltages and amperages are present in these machines. Ensure all steps are taken to render the machine safe before attempting to work on the equipment.
- All hardware covered by this manual have dangerous electrical voltages and can cause fatal electrical shock. Avoid contact with bare wires, terminals, connections, etc., on the hardware, if applicable. Ensure all appropriate covers, guards, grounds, and barriers are in place before operating the equipment. If work must be done around an operating unit, stand on an insulated dry surface to reduce shock hazard.
- Do not handle any kind of electrical device while standing in water, while barefoot, or while hands or feet are wet. **DANGEROUS ELECTRICAL SHOCK MAY RESULT.**
- If trained personnel must stand on metal or concrete while installing, servicing, adjusting, or repairing this equipment, place insulative mats over a dry wooden platform. Work on the equipment only while standing on such insulative mats.
- The National Electrical Code (NEC), Article 250 requires the frame of the equipment to be connected to an approved earth ground and/or grounding rods. This grounding will help prevent dangerous electrical shock that might be caused by a ground fault condition or by static electricity. Never disconnect the ground wire.
- Wire gauge sizes of electrical wiring, cables, and cord sets must be adequate to handle the maximum electrical current

(ampacity) to which they will be subjected.

- Before installing or servicing this (and related) equipment, make sure that all power voltage supplies are completely turned off at their source. Failure to do so will result in hazardous and possibly fatal electrical shock.
- In case of accident caused by electric shock, immediately shut down the source of electrical power. If this is not possible, attempt to free the victim from the live conductor. **AVOID DIRECT CONTACT WITH THE VICTIM.** Use a nonconducting implement, such as a dry rope or board, to free the victim from the live conductor. If the victim is unconscious, apply first aid and seek immediate medical attention.
- Never wear jewelry when working on this equipment. Jewelry can conduct electricity resulting in electric shock or may get caught in moving components causing injury.
- Keep a fire extinguisher near the hardware at all times. Do NOT use any carbon tetra-chloride type extinguisher. Its fumes are toxic, and the liquid can deteriorate wiring insulation. Keep the extinguisher properly charged and be familiar with its use. If there are any questions pertaining to fire extinguishers, please consult the local fire department.
- The illustrations in this manual are examples only and may differ from your unit.



## 2 NAMEPLATES AND PLACARDS

# FuelPort

# **SIMPLEX**<sup>®</sup>

(800) 637-8603

[www.simplexdirect.com](http://www.simplexdirect.com)

**W.O.#: XXXXX**

**MODEL: FP-X**

**ENCLOSURE: TYPE 3R**



### **WARNING**

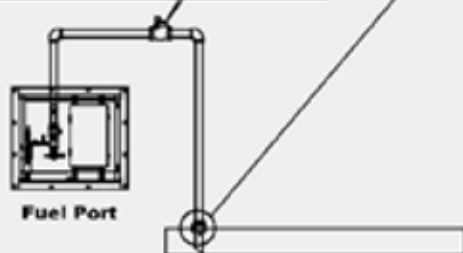
**FIRE AND SPILL HAZARD NOTICE**

#### **IMPORTANT INSTALLATION NOTE**

**Accidental Spill:** To prevent accidental spill due to siphon back flow, the tank must have a drop tube with an anti-siphon bleed hole as shown.

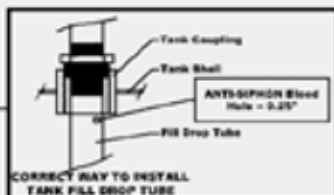
**For Operator Safety:** All elements of this system, including FuelPort, piping and tank must be connected to a common earth ground. Delivery truck must be grounded to the system prior to making fuel connection.

Install Optional Emergency, Self-Closing, Fusible-Link Fire Valve in Supply Line Between FuelPort And Tank Available From Simplex, 2" = P/N22932011



Fuel Port

Base Tank



CORRECT WAY TO INSTALL TANK FILL DROP TUBE

**FuelPort**  
**SIMPLEX**<sup>®</sup>  
(800) 637-8603  
[www.simplexdirect.com](http://www.simplexdirect.com)

## 3 DESCRIPTION AND SPECIFICATION

The Simplex FuelPort is a compact, economical solution for simple filling and spill prevention for fuel-storage tanks. The FuelPort includes all valves and fittings necessary for hose connection from a pumper truck.

The FuelPort is available in two models: The standard FuelPort, which is 32 inches tall and has a 7-gallon containment capacity, and the Full-Size FuelPort, which is 51.5 inches tall and has a 20-gallon containment capacity, as well as a storage bin.

The FuelPort can be bolted to the tank, be attached to a base, or attached via clamps to a 2" or 3" post.

The Full-Size FuelPort can be secured against a wall or floor.

Both models are suitable for use with fuel oil or gasoline.



## Table 1 Specifications

**Delivery Type** Pumper truck

**Enclosure** Weatherproof, lockable box with 7 gallon spill containment

**Inlet Connection** Quick disconnect hose coupling with dust plug

**Shutoff** Manual

**Types of Fuel** Class I liquids, < 100°F flash point (Gasoline)  
Class II liquids, 100°F - 140°F flash point (Diesel fuel)

**Inlet Fitting Size** 2", 3" or 4" (3" internals and 3" NPT outlet)

**Spill Containment** **FuelPort:** 7 gallons  
**Full-Size FuelPort:** 20 gallons

**Surface Finish** UL-listed powder-coat process

**Hand Pump Capacity** 1 GPM

**Dimensions (Approximate)** **FuelPort:** 24"W x 32"H x 20.5"D  
**Full-Size FuelPort:** 35"W x 51.5"H x 24"D  
**FuelPort with Flush Wall-mounting Flange:** 30"W x 38.5"H x 25"D

**Weight (Approximate)** **FuelPort:** 129 lbs.  
**Full-Size FuelPort:** 250 lbs.  
**FuelPort with Flush Wall-mounting Flange:** 245 lbs.

Figure 1 FuelPort Dimensions

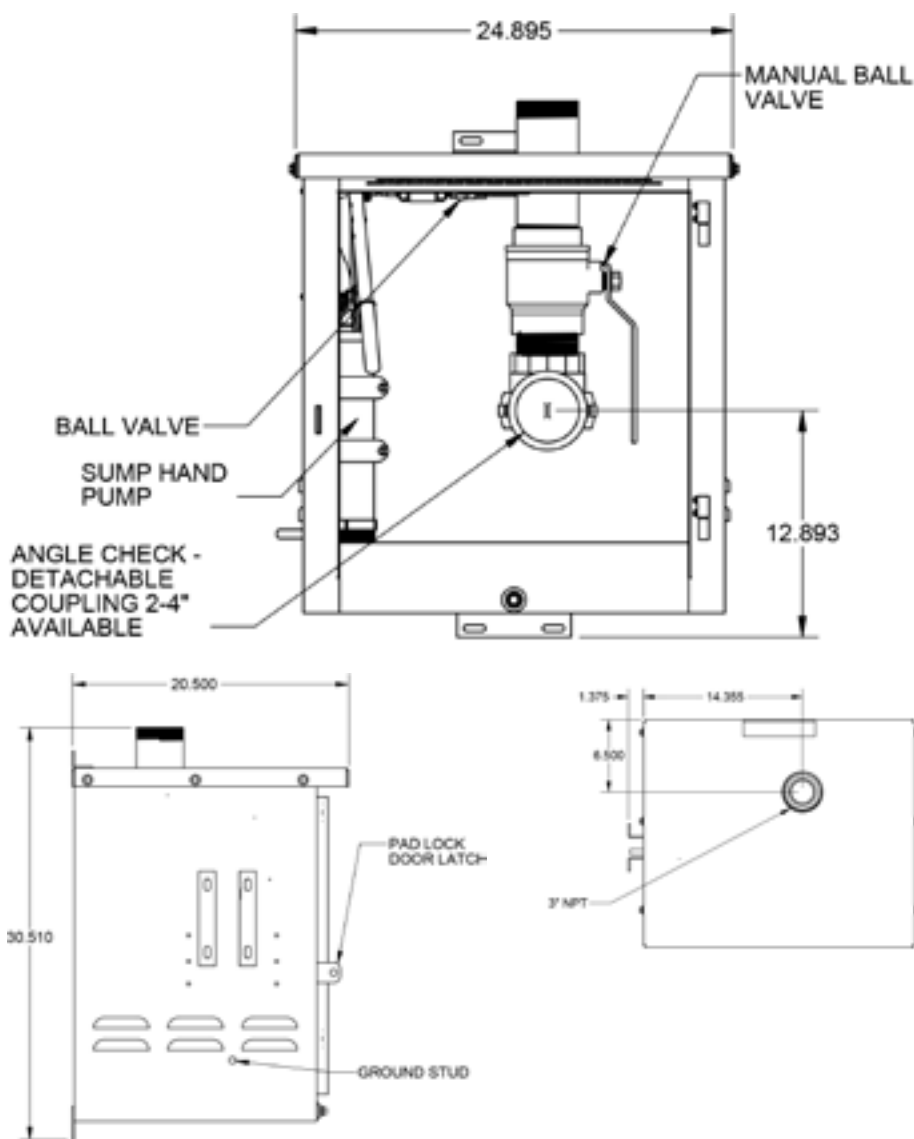


Figure 2 Full-Size FuelPort Dimensions

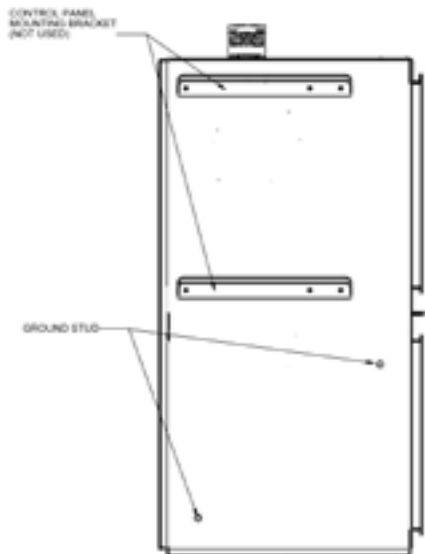
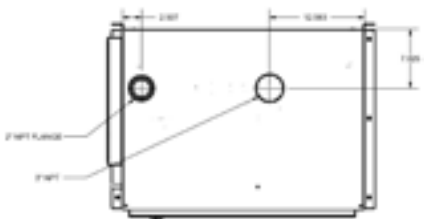
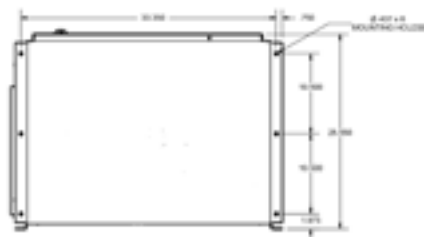
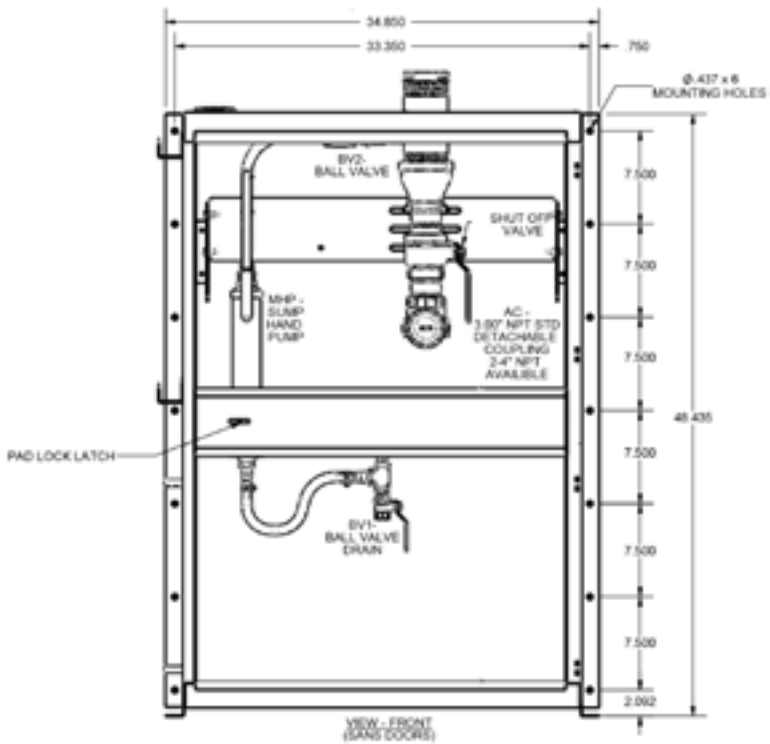
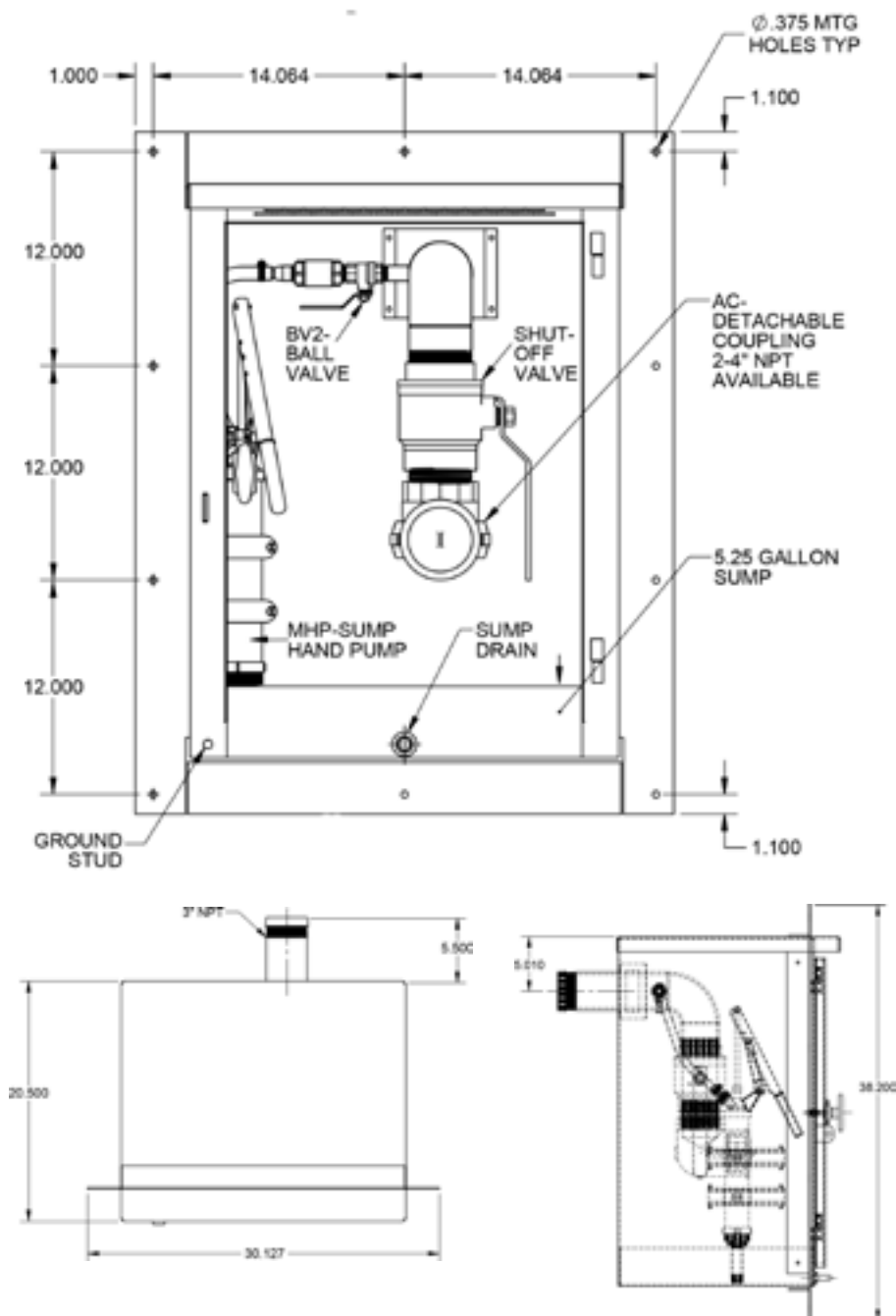


Figure 3 Recessed-Mount FuelPort Dimensions



## 4 UNPACKING

### INCLUDED COMPONENTS AND PARTS

The following items are included with your FuelPort. If any of the following are not included, please contact Simplex, Inc., at 800-637-8603.

1. FuelPort
2. Manual

### PRIMARY INSPECTION

Preventative visual inspection of the shipping crate and the fuel port is advised. Mechanical problems due to handling and vibration may occur. Never pump fuel through a FuelPort before performing this procedure. The following inspection is recommended before installation and as part of a 6-month maintenance schedule or as the fuel port is relocated:

1. If the crate shows any signs of damage, examine the fuel port in the corresponding areas for signs of initial problems.
2. Check the entire outside of the cabinet for any visual damage, which could cause internal mechanical problems due to reduced clearance.



**If any problems are observed during Primary Inspection, call Simplex 24 hours a day at 800-637-8603**

# 5 INSTALLATION

**Recessed-wall installations must be specified when the fuel port is ordered, as they require a different cabinet**

## **WELDING FUELPORT TO TANK**

## **ATTACHING FUELPORT TO POST**

The FuelPort can be installed in four ways:

1. Welded to a fuel tank
2. Attached to a post
3. Placed in a base
4. Recessed into a wall

The Full-Size FuelPort can be installed in one way:

1. Bolted to wall/floor

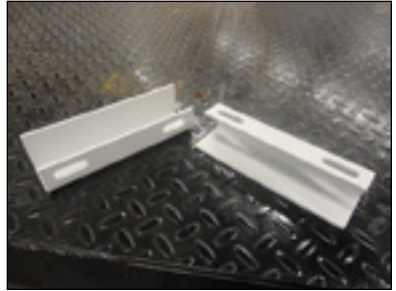
You can mount the FuelPort directly on a storage tank by welding two mounting brackets (Figure 4) to the tank and bolting the FuelPort to them.

Follow all necessary safety procedures when welding the brackets to your tank. Simplex is not responsible for damages or injuries sustained due to improper safety precautions.

With the post mounting option, the FuelPort can be attached to a free-standing post (Figure 6).

To do so, attach the post to a concrete pad and use the supplied U-bolt post brackets to attach the FuelPort to it.

**Figure 4 Weld Brackets**



**Figure 5 FuelPort Post**



**Figure 6 FuelPort Base**



## **ATTACHING FUELPORT TO BASE**

To affix the FuelPort to a base, simply attach the base to a concrete pad using the predrilled holes in the base's feet, then affix the FuelPort to the base via the mounting holes on the front (**Figure 6 on page 10**).

## **MOUNTING FUELPORT RECESSED INTO WALL**

To install the FuelPort recessed into a wall, prepare an opening matching the dimensions of the FuelPort and attach it via the predrilled mounting flange. Ensure that the wall and mounting hardware are sufficient to support the FuelPort's weight. Simplex is not responsible for damages occurring as a result of insufficient support.

## **MOUNTING FULL-SIZE FUELPORT**

The Full-Size FuelPort can be secured against a wall, a floor, or both using the predrilled mounting flange running the height and length of the cabinet.

Ensure that the surface you are mounting the Full-Size FuelPort to and the mounting hardware are sufficient to support the FuelPort's weight. Simplex is not responsible for damages occurring as a result of insufficient support.

## 6 OPERATING INSTRUCTIONS

1. Connect ground cable
2. Unlock FuelPort and open door
3. Connect delivery hose to hose coupling
4. Open valve on truck and valve in FuelPort
5. Start fill pump
6. Stop fill pump when tank is full or as needed
7. Close truck valve and valve in FuelPort
8. Disconnect delivery hose from hose coupling
9. Close and lock FuelPort door
10. Disconnect ground cable



# APPENDIX A — PRODUCT WARRANTY

SIMPLEX, Inc., warrants the industrial electrical control, test and accessory equipment and parts and accessories thereof to be the kind and quality described in SIMPLEX's specifications and to be free from defects in material or workmanship under normal service, its obligations under this warranty being limited to repairing or replacing, at its option, any part or parts which shall, within twelve (12) months from date of shipment from its factory, as indicated by serial date code on the nameplate or sales records, be returned to SIMPLEX or an authorized SIMPLEX repair station, with transportation costs prepaid, and which its examination shall disclose to its satisfaction to have been thus defective.

The provisions of this warranty shall not apply to any equipment, part or accessory which

- (a) has been improperly specified by buyer;
- (b) has been improperly stored or handled prior to placing in service;
- (c) has been improperly mounted or connected;
- (d) has not been operated within specifications stated on its nameplate, label or placard;
- (e) has not been properly maintained;
- (f) parts supplied by buyer for inclusion in finished equipment are not covered by this warranty;
- (g) components or assemblies specified by buyer with no substitution permissible that are not normally used by SIMPLEX.

SIMPLEX reserves the right to reject warranty claims of any kind against assembled equipment, parts or material for which SIMPLEX has not received payment in full.

Should buyer, at his own risk, elect to replace defective equipment or parts in the field rather than return equipment to SIMPLEX's factory or authorized repair station, SIMPLEX will supply and invoice parts at normal prices upon receipt of buyer's bona-fide purchase order. Defective equipment or parts returned for in-warranty crediting in exchange for replacement parts must be returned within 45 days from date of shipment of replacement in order to qualify for warranty consideration. Defective equipment or parts returned after 45 days may be subject to a restocking charge of 20% or a minimum charge of \$50.00, whichever is greater.

This warranty is in lieu of all other warranties, express or implied, and all other obligations or liabilities on the part of SIMPLEX, and SIMPLEX neither assumes nor authorizes any other person to assume for it any other liability in connection with any such electrical control, test or accessory equipment or accessories or parts.

## **WE WELCOME YOUR FEEDBACK!**

Simplex designs and manufactures Load Banks and Fuel Supply systems for power generation and liquid automation. Simplex is certified to ISO 9001:2008. Used world-wide for mission critical environments in manufacturing, technology, transportation, hospitals, schools, public utilities and the U.S. military,

Simplex products provide solutions meeting exact requirements, from the simplest testing and proving equipment for backup generators to custom-designed and engineered mission-critical fuel systems. At Simplex, we are experts at building products that meet our customers' exact requirements. For a complete listing of Simplex products visit [www.simplexdirect.com](http://www.simplexdirect.com).

Simplex welcomes your questions, comments, suggestions, compliments, and complaints as a way to continuously improve our service to you.

Please call us at 800-637-8603 (24 hours a day) or visit [www.simplexdirect.com](http://www.simplexdirect.com).

# RENT DIRECT



## **LOAD BANK RENTAL AND SERVICE CENTERS**

Simplex Onsite can place Load Banks, Cables, Transformers, and Fuel Polishers rentals as well as service technicians at your fingertips anywhere in the United States quickly and cost effectively.

For information call 855-767-5483 or visit [www.simplexonsite.com](http://www.simplexonsite.com).

### **COLORADO**

Serving Colorado, Idaho, Montana, Nevada, Utah and Wyoming

### **GEORGIA**

Serving Alabama, Florida, Georgia, North Carolina and South Carolina

### **ILLINOIS**

Serving Illinois, Indiana, Kentucky, Michigan, Missouri and Tennessee

### **MASSACHUSETTS**

Serving Connecticut, Delaware, Maine, Maryland, Massachusetts, New Hampshire, New Jersey, New York, Pennsylvania and Vermont

### **MINNESOTA**

Serving Iowa, Minnesota, North Dakota, South Dakota and Wisconsin

### **OHIO**

Serving Indiana, Michigan, Ohio, Pennsylvania (western) and West Virginia

### **TEXAS**

Serving Arkansas, Louisiana, New Mexico, Oklahoma and Texas



Simplex, Inc.

5300 Rising Moon Road  
Springfield, IL 62711-6228

2100 Boggs Road  
Duluth, GA 30096-4691

(800) 637-8603

[www.simplexdirect.com](http://www.simplexdirect.com)