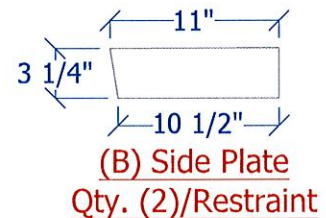
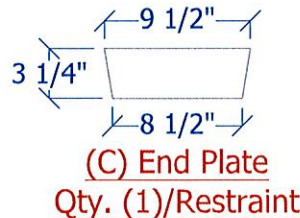
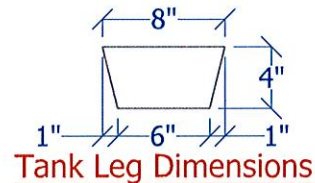
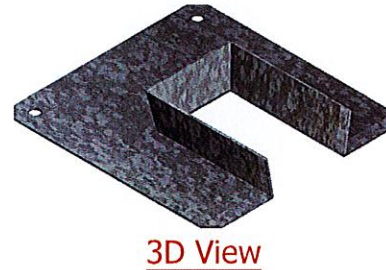
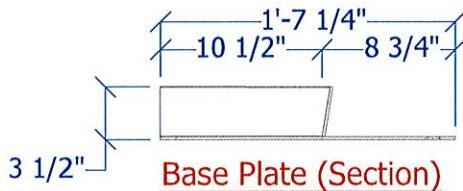
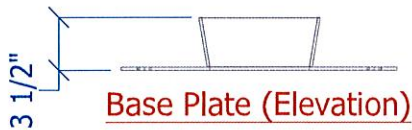
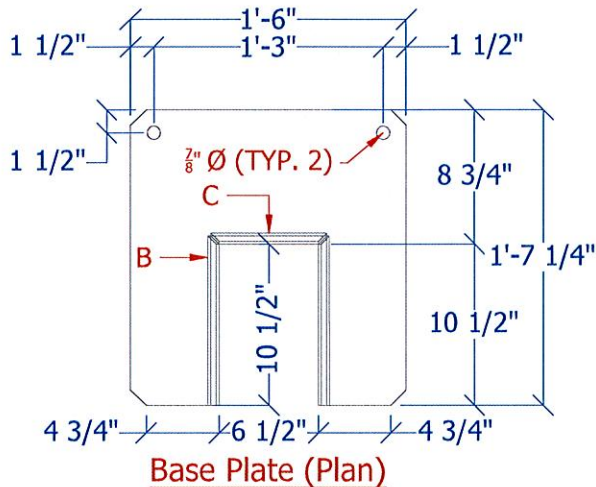






EQR Seismic Restraints 250 - 2,000 Gallon ConVault Tank



PROJECT NAME & ADDRESS		INSTALLATION & DESIGN NOTES		<div><div><div>Core</div><div>engineered solutions</div><div>safety. compliance. reliability.</div></div><div><div>LOCATION & CONTACT</div><div>WASHINGTON DC (HEADQUARTERS) 620 HERNDON PARKWAY, SUITE 120 HERNDON, VA 20170 PHONE: (800)628-5502</div><div>NEW YORK 8 AIRLINE DRIVE, SUITE 110 ALBANY, NY 12205 PHONE: (518)635-4343</div></div></div>
STANDARD MFG. DETAIL		<div>1. USE $\frac{3}{16}$" THICK STEEL PLATE MATERIALS FOR ALL MATERIALS.</div> <div>2. WELD SIDE AND END PLATES TOGETHER, THEN WELD TO BASE. ALL WELDS SHALL BE 3/16 FILLET, CONTINUOUS.</div> <div>3. UNIT TO BE HOT DIPPED GALVANIZED AFTER FABRICATION.</div> <div>4. FOUR (4) RESTRAINTS REQUIRED FOR 250-2,000 GALLON TANKS, ONE (1) ON EACH SIDE OF EACH TANK LEG.</div> <div>5. HILTI KB-TZ $\frac{3}{4}$" X 5 $\frac{1}{2}$" A304 SS ANCHOR BOLTS, TWO (2) PER RESTRAINT.</div> <div>6. MINIMUM 4 $\frac{1}{2}$" EMBEDMENT DEPTH.</div> <div>7. MINIMUM 6" DISTANCE FROM EDGE OF CONCRETE SLAB / FOOTING.</div> <div>8. CONCRETE SLAB TO HAVE MINIMUM 5,000 PSI COMPRESSIVE STRENGTH.</div>		
<div>THIS DOCUMENT IS THE PROPERTY OF CORE ENGINEERED SOLUTIONS. DO NOT REPRODUCE, FURNISH TO OTHERS, OR USE FOR OTHER THAN PURPOSE INTENDED WITHOUT EXPRESS WRITTEN CONSENT OF CORE ENGINEERED SOLUTIONS. ALL RIGHTS ARE HEREIN RESERVED.</div> <div><div><div><div></div><div></div><div></div></div></div></div>		DATE: 02/13/2025	<div>SHEET NO:</div> <div>EQR1</div>	
		REV: 000		
		SCALE: 1" = 1'-0" TOLERANCES: +/- $\frac{1}{8}$ "		
		DRAWING: CVTA-EQR1		
		TANK MFG. FACILITY: GREENWICH		

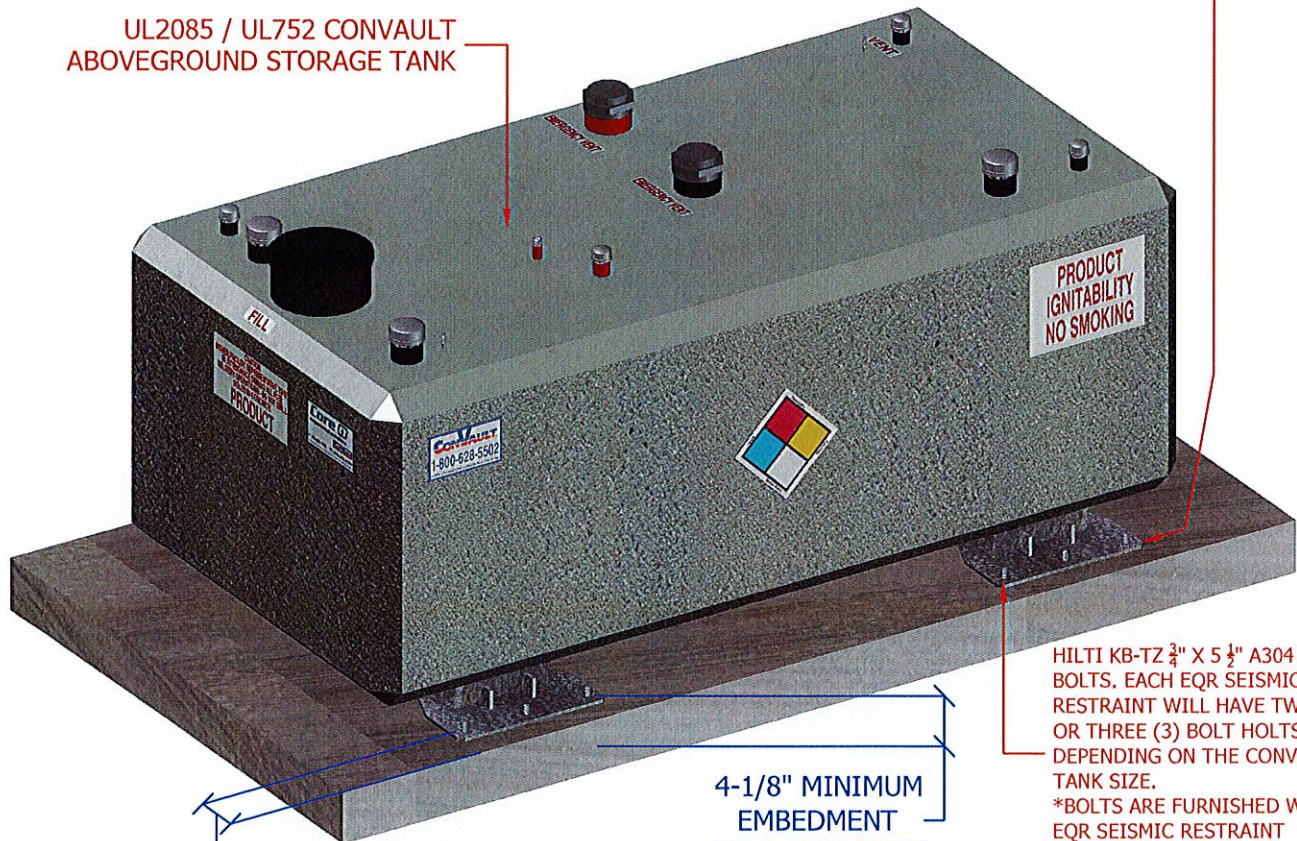




EQR Seismic Restraints Installation Guide

EQR SEISMIC RESTRAINT FOR EACH SIDE OF CONVAULT TANK LEG. EACH CONVAULT TANK WILL HAVE EITHER TWO (2) OR THREE (3) LEGS DEPENDING ON THE SIZE.

UL2085 / UL752 CONVAULT ABOVEGROUND STORAGE TANK



HILTI KB-TZ $\frac{3}{4}$ " X $5\frac{1}{2}$ " A304 SS BOLTS. EACH EQR SEISMIC RESTRAINT WILL HAVE TWO (2) OR THREE (3) BOLT HOLTS DEPENDING ON THE CONVAULT TANK SIZE.
*BOLTS ARE FURNISHED WITH EQR SEISMIC RESTRAINT PACKAGE.

4-1/8" MINIMUM EMBEDMENT INTO CONCRETE

6" MINIMUM DISTANCE FROM BOLT HOLE TO EDGE OF CONCRETE PAD OR FOOTER

INSTALLATION PROCEDURE

1. SET CONVAULT TANK IN ACCORDANCE WITH CONVAULT OWNER'S MANUAL AND UNLOADING INSTRUCTIONS. USE NEOPRENE BEARING PADS AS APPLICABLE FOR TANK SIZE (2,000 GALLONS OR GREATER).
2. INSERT EQR SEISMIC RESTRAINT AROUND EACH LEG AND PUSH FLUSH WITH CHAMFER OF LEG.
3. VERIFY THAT YOU HAVE 6" CLEARANCE BETWEEN BOLT HOLES AND EDGE OF CONCRETE PAD OR FOOTER.
4. MARK HOLES AND DRILL HOLES FOR CONCRETE ANCHOR USING (ROTARY) HAMMER DRILL WITH CARBIDE-TIPPED MASONRY DRILL BIT.
5. VERIFY THAT THE HOLE PROVIDES FOR AT LEAST $4\frac{1}{8}$ " EMBEDMENT OF THE CONCRETE ANCHOR.
6. CLEAN THE HOLE USING A VACUUM TO REMOVE ANY DUST OR DEBRIS FROM THE HOLE.
7. INSERT ANCHOR BOLTS INTO THE HOLE, TAP IN WITH HAMMER AS NECESSARY AND TIGHTEN NUT TO SECURE.
8. VERIFY THAT THE EQR SEISMIC RESTRAINTS ARE SECURED AND PROPERLY SEATED.

INSTALLATION NOTES

1. 250-GALLON TO 6,000-GALLON TANKS HAVE TWO (2) LEGS AND REQUIRE FOUR (4) TOTAL EQR SEISMIC RESTRAINTS.
2. 8,000-GALLON TO 12,000-GALLON TANKS HAVE THREE (3) LEGS AND REQUIRE SIX (6) TOTAL EQR SEISMIC RESTRAINTS.
3. 250-GALLON TO 2,000-GALLON TANKS REQUIRE TWO (2) ANCHOR BOLTS PER EQR SEISMIC RESTRAINT.
4. 3,000-GALLON TO 12,000-GALLON TANKS REQUIRE THREE (3) ANCHOR BOLTS PER EQR SEISMIC RESTRAINT.
5. CONCRETE SLAB TO HAVE MINIMUM 5,000 PSI COMPRESSIVE STRENGTH.

DATE: 02/13/2025

REV: 000

SCALE: NTS

DRAWING: CVTA-EQR-1G

TANK MFG. FACILITY: GREENWICH

SHEET NO:

IG-EQR

Core 
engineered solutions

safety. compliance. reliability.

LOCATION & CONTACT

WASHINGTON DC (HEADQUARTERS)
620 HERNDON PARKWAY, SUITE 120
HERNDON, VA 20170
PHONE: (800)628-5502

NEW YORK
8 AIRLINE DRIVE, SUITE 110
ALBANY, NY 12205
PHONE: (518)635-4343



Core Engineered Solutions

800.628.5502

info@core-es.com

www.core-es.com