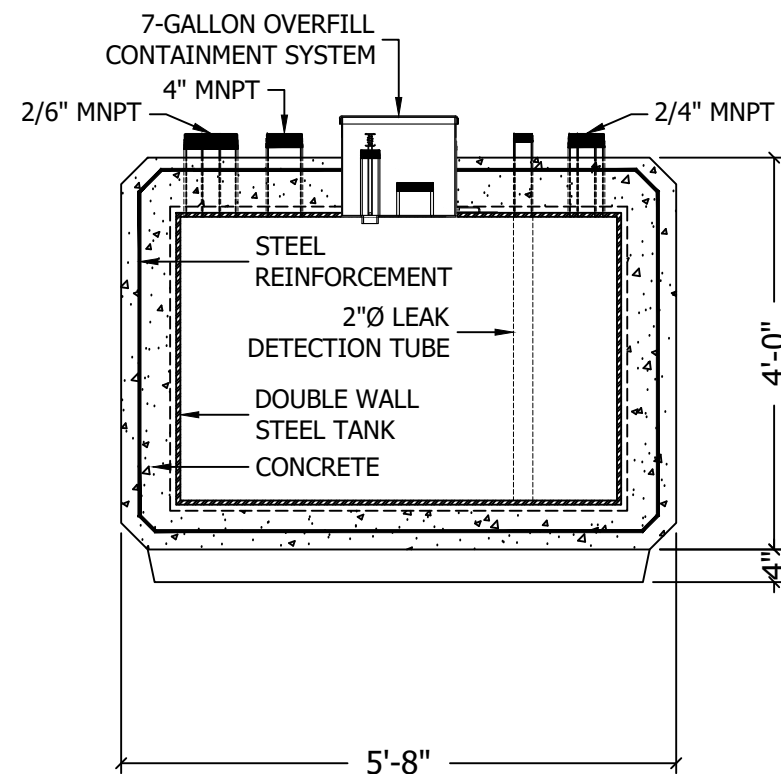
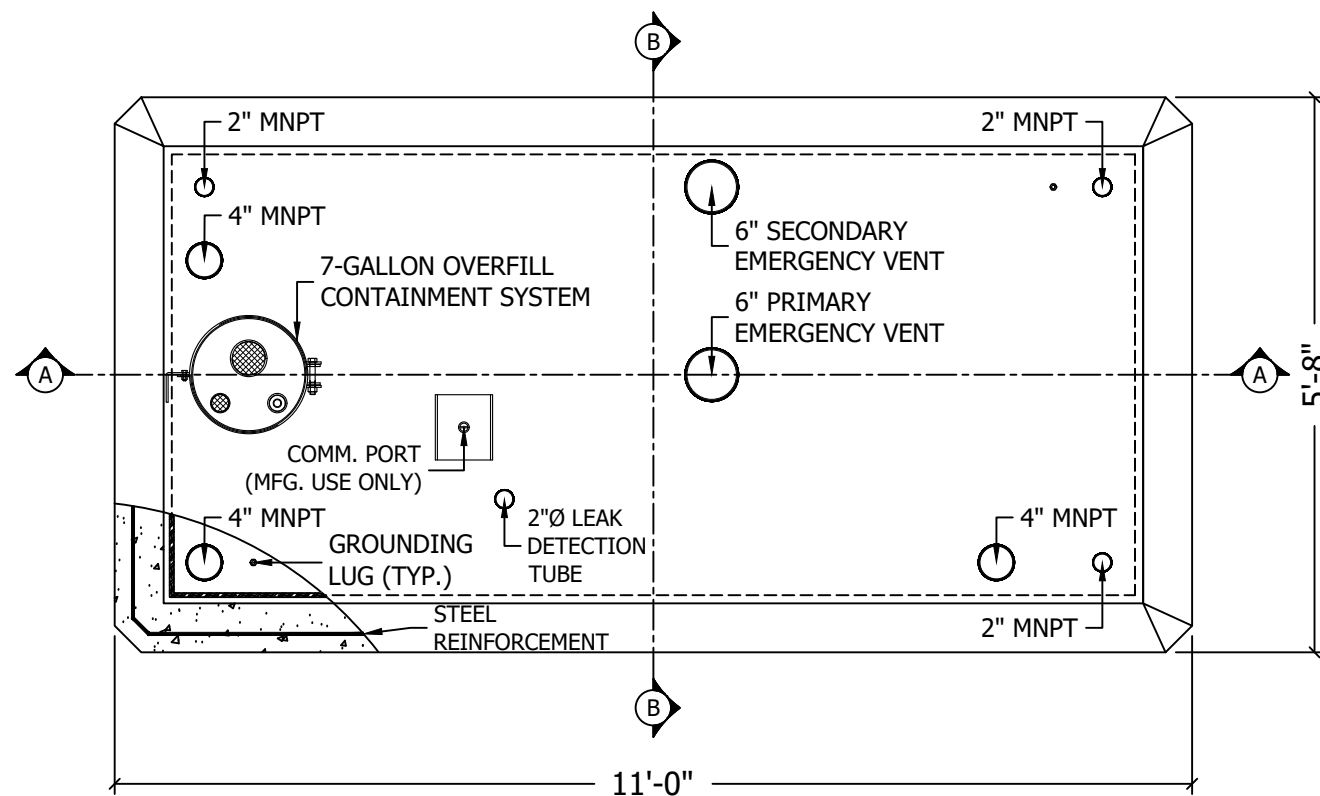


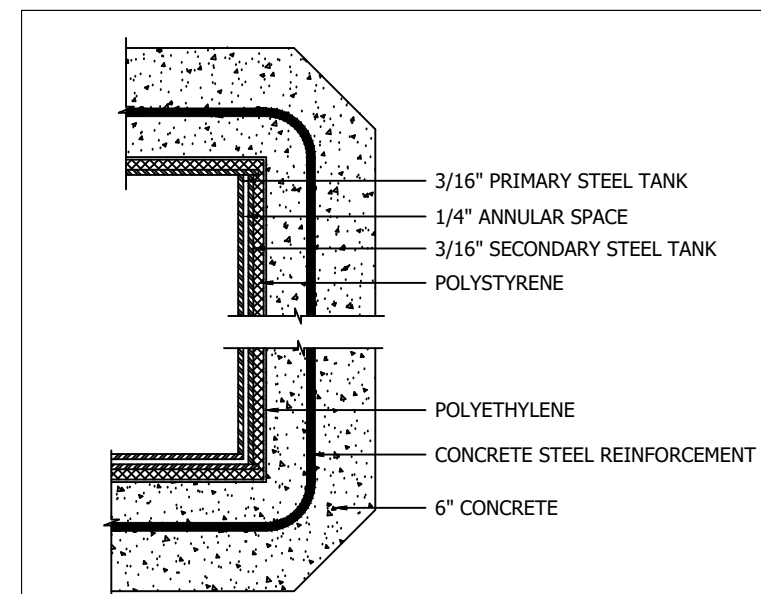
SECTION A-A



SECTION B-B



PLAN VIEW



2 CORNER DETAILS  
NTS

## DESIGN DATA:

<b>CAPACITY:</b> 1,000-GALLONS
<b>MODEL NO:</b> CVTDW-01000-FRM
<b>TYPE:</b> DOUBLE WALL - TYPE I
<b>PRODUCT STORED:</b> ---
<b>NO. REQ.:</b> 1
<b>OPERATING PRESSURE:</b> ATMOSPHERIC
<b>SPECIFIC GRAVITY:</b> 1.0
<b>TANK MATERIAL:</b> MILD CARBON STEEL A36
<b>TANK FITTINGS:</b> NPT
<b>TANK OVERFILL CONTAINER:</b> 7 GALLON W/ 4" FILL, 2" STICK PORT & DRAIN VALVE
<b>TANK MANWAY:</b> ---
<b>TANK SUMP BOX:</b> ---
<b>THICKNESS:</b> INNER - 7 GAUGE <b>THICKNESS:</b> OUTER - 7 GAUGE
<b>CONSTRUCTION:</b> LAP WELD OUTSIDE
<b>TANK TEST:</b> INNER - 5 PSIG <b>TANK TEST:</b> OUTER - 3 PSIG
<b>EXTERIOR FINISH:</b> CONCRETE ENCASED OPTION TYPE: EXPOSED AGGREGATE OPTION TYPE: MASTERPROTECT HB400 (PAINTED)
<b>LABEL:</b> UL2085 & UL752
<b>TANK WEIGHT:</b> APPROX. 21,500LBS.



### LOCATION & CONTACT

WASHINGTON DC (HEADQUARTERS)  
620 HERNDON PARKWAY, SUITE 120  
HERNDON, VA 20170  
PHONE: (800)628-5502

NEW YORK  
8 AIRLINE DRIVE, SUITE 110  
ALBANY, NY 12205  
PHONE: (518)635-4343

### PROJECT NAME AND ADDRESS:

STANDARD MFG. DRAWING

THIS DOCUMENT IS THE PROPERTY OF CORE ENGINEERED SOLUTIONS. DO NOT REPRODUCE, FURNISH TO OTHERS, OR USE FOR OTHER THAN PURPOSE INTENDED WITHOUT EXPRESS WRITTEN CONSENT OF CORE ENGINEERED SOLUTIONS. ALL RIGHTS ARE HEREIN RESERVED.



DATE: 04/17/2024	SHEET NO.
REV: 000	
SCALE: REFER TO NOTES	
DRAWING: CVTDW-01000-FRM	CVT 1K