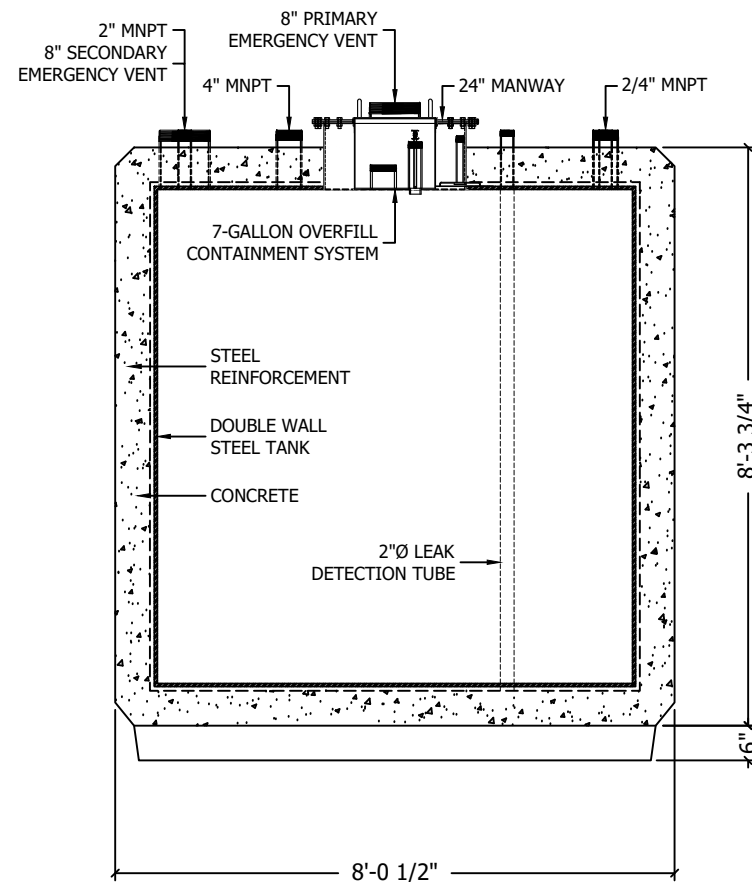
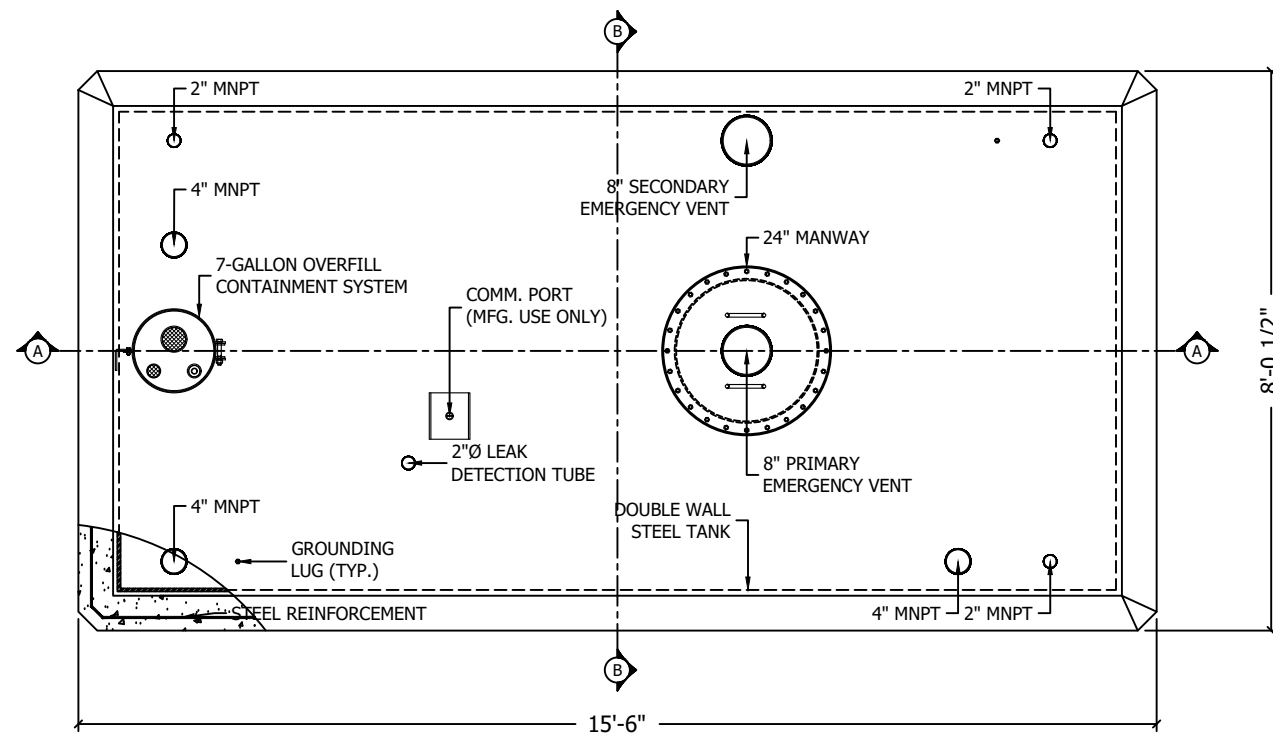


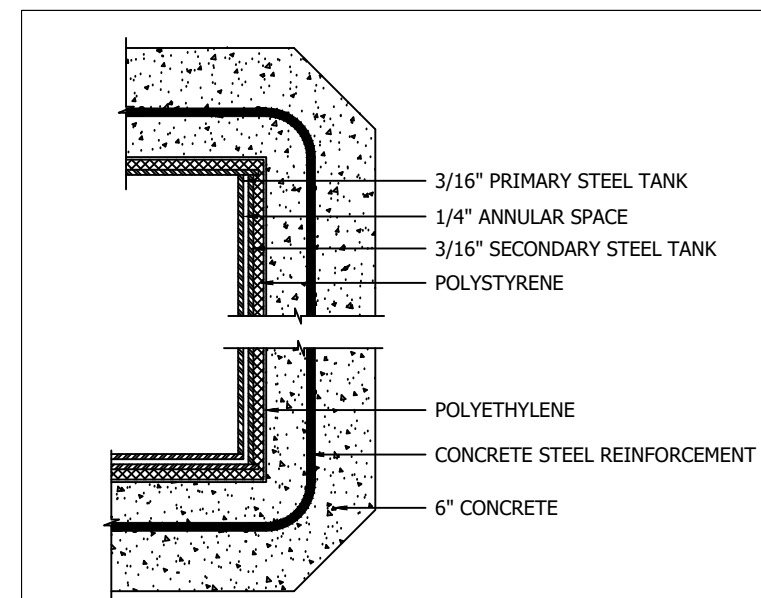
SECTION A-A



SECTION B-B



PLAN VIEW



2 CORNER DETAILS
NTS

DESIGN DATA:

CAPACITY: 5,200-GALLONS
MODEL NO: CVTDW-05200-FRM
TYPE: DOUBLE WALL - TYPE I
PRODUCT STORED: ---
NO. REQ.: 1
OPERATING PRESSURE: ATMOSPHERIC
SPECIFIC GRAVITY: 1.0
TANK MATERIAL: MILD CARBON STEEL A36
TANK FITTINGS: NPT
TANK OVERFILL CONTAINER: 7 GALLON W/ 4" FILL, 2" STICK PORT & DRAIN VALVE
TANK MANWAY: 24"
TANK SUMP BOX: ---
THICKNESS: INNER - 7 GAUGE THICKNESS: OUTER - 7 GAUGE
CONSTRUCTION: LAP WELD OUTSIDE
TANK TEST: INNER - 5 PSIG TANK TEST: OUTER - 3 PSIG
EXTERIOR FINISH: CONCRETE ENCASED OPTION TYPE: EXPOSED AGGREGATE OPTION TYPE: MASTERPROTECT HB400 (PAINTED)
LABEL: UL2085 & UL752
TANK WEIGHT: APPROX. 59,200LBS.



LOCATION & CONTACT

WASHINGTON DC (HEADQUARTERS)
620 HERNDON PARKWAY, SUITE 120
HERNDON, VA 20170
PHONE: (800)628-5502

NEW YORK
8 AIRLINE DRIVE, SUITE 110
ALBANY, NY 12205
PHONE: (518)635-4343

PROJECT NAME AND ADDRESS:

STANDARD MFG. DRAWING

THIS DOCUMENT IS THE PROPERTY OF CORE ENGINEERED SOLUTIONS. DO NOT REPRODUCE, FURNISH TO OTHERS, OR USE FOR OTHER THAN PURPOSE INTENDED WITHOUT EXPRESS WRITTEN CONSENT OF CORE ENGINEERED SOLUTIONS. ALL RIGHTS ARE HEREIN RESERVED.



DATE: 04/17/2024	SHEET NO.
REV: 000	
SCALE: REFER TO NOTES	
DRAWING: CVTDW-05200-FRM	CVT 5.2K