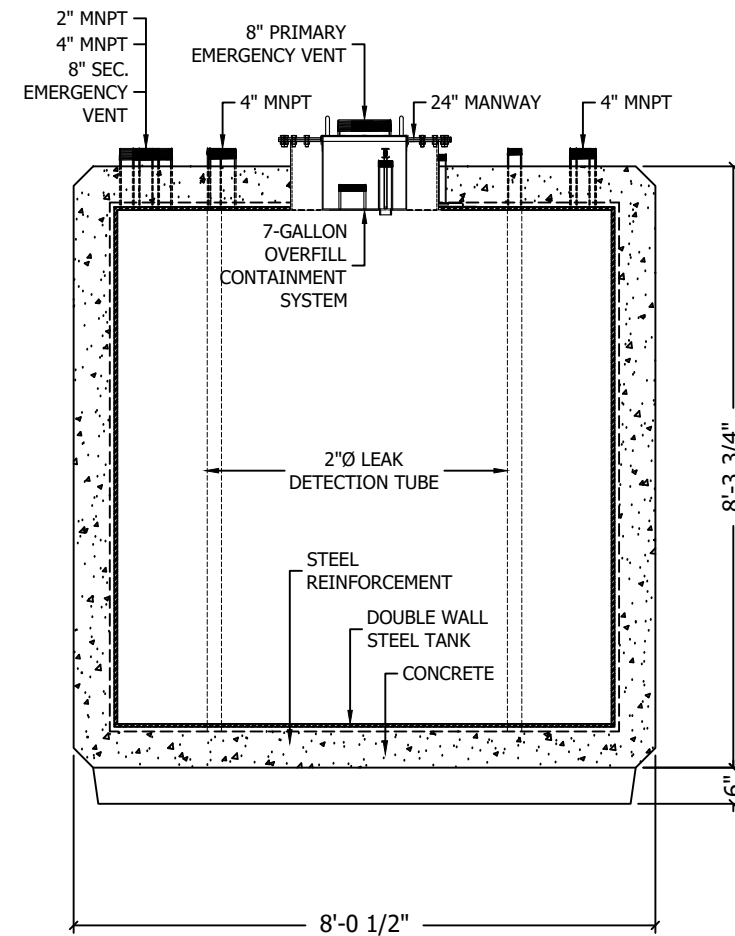
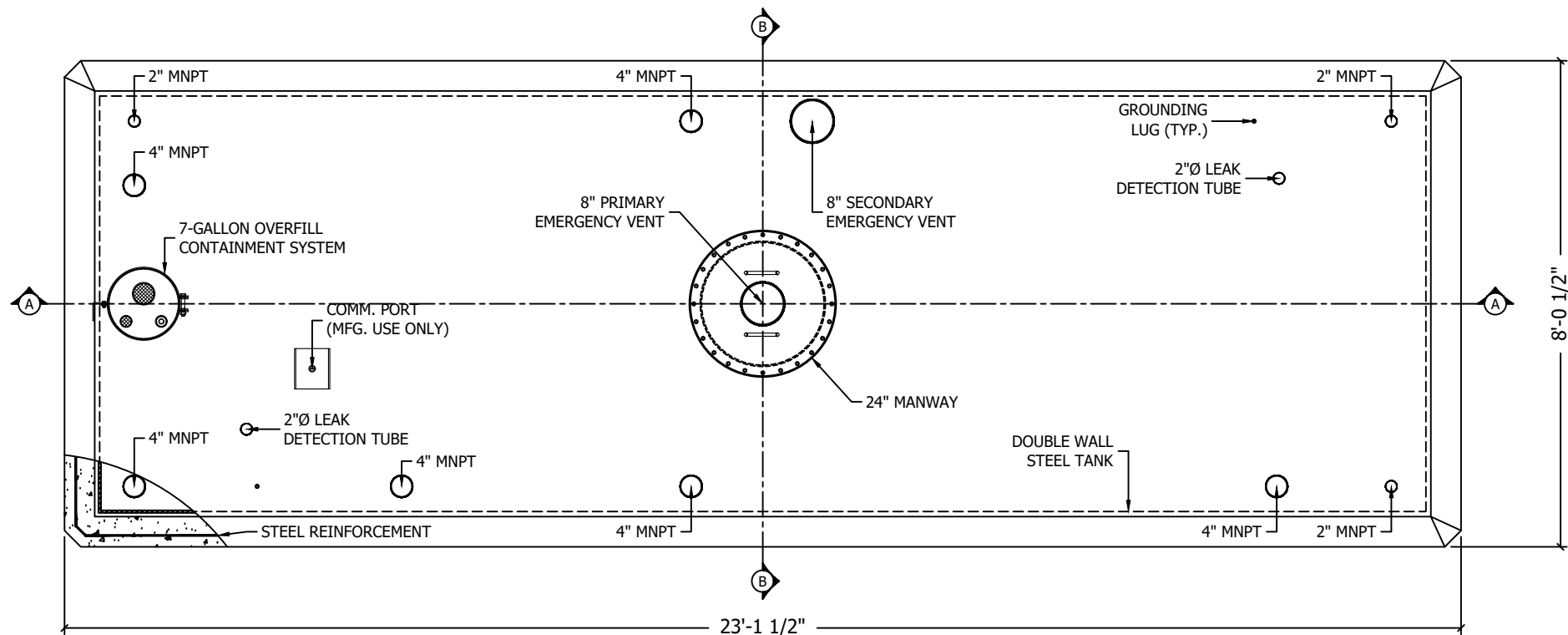


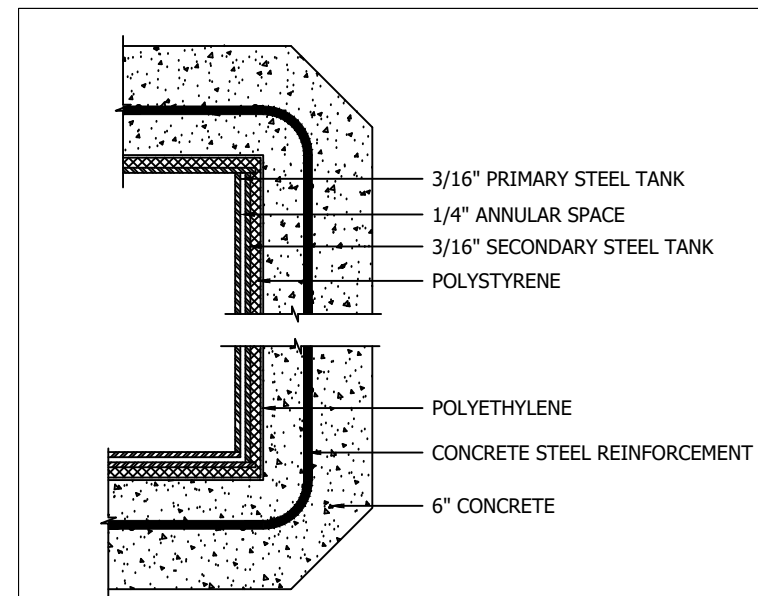
SECTION A-A



SECTION B-B



PLAN VIEW



CORNER DETAILS

NTS

DESIGN DATA:

CAPACITY: 8,000-GALLONS

MODEL NO: CVTDW-08000-FRM

TYPE: DOUBLE WALL - TYPE I

PRODUCT STORED: ---

NO. REQ.: 1

OPERATING PRESSURE: ATMOSPHERIC

SPECIFIC GRAVITY: 1.0

TANK MATERIAL: MILD CARBON STEEL A36

TANK FITTINGS: NPT

TANK OVERFILL CONTAINER: 7 GALLON W/ 4" FILL, 2" STICK PORT & DRAIN VALVE

TANK MANWAY: 24"

TANK SUMP BOX: ---

THICKNESS: INNER - 7 GAUGE

THICKNESS: OUTER - 7 GAUGE

CONSTRUCTION: LAP WELD OUTSIDE

TANK TEST: INNER - 5 PSIG

TANK TEST: OUTER - 3 PSIG

EXTERIOR FINISH: CONCRETE ENCASED
OPTION TYPE: EXPOSED AGGREGATE
OPTION TYPE: MASTERPROTECT HB400 (PAINTED)

LABEL: UL2085 & UL752

TANK WEIGHT: APPROX. 76,400LBS.

Core 
engineered solutions
safety. compliance. reliability.

LOCATION & CONTACT

WASHINGTON DC (HEADQUARTERS)
620 HERNDON PARKWAY, SUITE 120
HERNDON, VA 20170
PHONE: (800)628-5502

NEW YORK
8 AIRLINE DRIVE, SUITE 110
ALBANY, NY 12205
PHONE: (518)635-4343

PROJECT NAME AND ADDRESS:

STANDARD MFG. DRAWING

THIS DOCUMENT IS THE PROPERTY OF CORE ENGINEERED SOLUTIONS.
DO NOT REPRODUCE, FURNISH TO OTHERS, OR USE FOR OTHER THAN
PURPOSE INTENDED WITHOUT EXPRESS WRITTEN CONSENT OF CORE
ENGINEERED SOLUTIONS. ALL RIGHTS ARE HEREIN RESERVED.

Convault

DATE: 04/17/2024

REV: 000

SCALE: REFER TO NOTES

DRAWING: CVTDW-08000-FRM

SHEET
NO.

CVT
8K