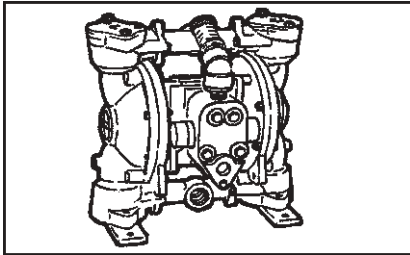




MODELS 4100, 4105, 4110 FLUID EVACUATION AND DISPOSAL SYSTEM

INSTALLATION INSTRUCTIONS



DESCRIPTION

The Fluid Evacuation and Disposal System provides a clean, safe way to dispose of waste fluids. The system features a U.L. Approved corrosion resistant aluminum double diaphragm pump that creates a powerful suction to evacuate waste fluids and transfer them through a enclosed system to a remote storage tank.

The system can be connected by kits to evacuate waste oil from rolling drain pans, portable oil drain containers and differentials and transaxles. The pump is air operated and can be mounted on any convenient wall surface. One basic system can be connected with additional hardware to serve multiple service bays.

MODEL 4100

BASIC FLUID EVACUATION SYSTEM

System includes pump, hoses and all necessary waste oil and air line connections.

MODEL 4105

PORTABLE DRAIN KIT

Kit includes quick disconnect couplings and all mounting hardware for connection to portable waste oil drains.

MODEL 4110

DIFFERENTIAL AND TRANSAXLE KIT

Kit includes hose, fittings and interchangeable wands for all car makes and models that allow fluid evacuation through sight plug openings.

OWNER/OPERATOR RESPONSIBILITY

It is the owner/operator responsibility to properly use and maintain this equipment.

The instructions and warnings contained in this manual shall be read and understood by the owner/operator prior to operating this equipment.

If an owner/operator does not understand English, the contents of this manual shall be explained in the owner/operator's native language to assure the owner/operator comprehends.

It is the owners/operators responsibility to maintain the legibility of all warning and instruction labels.

The owner/operator shall retain this manual for future reference to important warnings and installation instructions.

INSTALLATION

The Fluid Evacuation and Disposal System installation and use must be in accordance with the Flammable and Combustible Liquids Code (NFPA 30) and Automotive and Marine Service Station Code (NFPA 30A) and must comply with all local, state and Federal codes.

Also, the United States Government safety standards have been adopted under the Occupational Safety and Health Act. These standards should be consulted, particularly the General Standards, Part 1910, and the Construction Standard, Part 1926.

GROUNDING

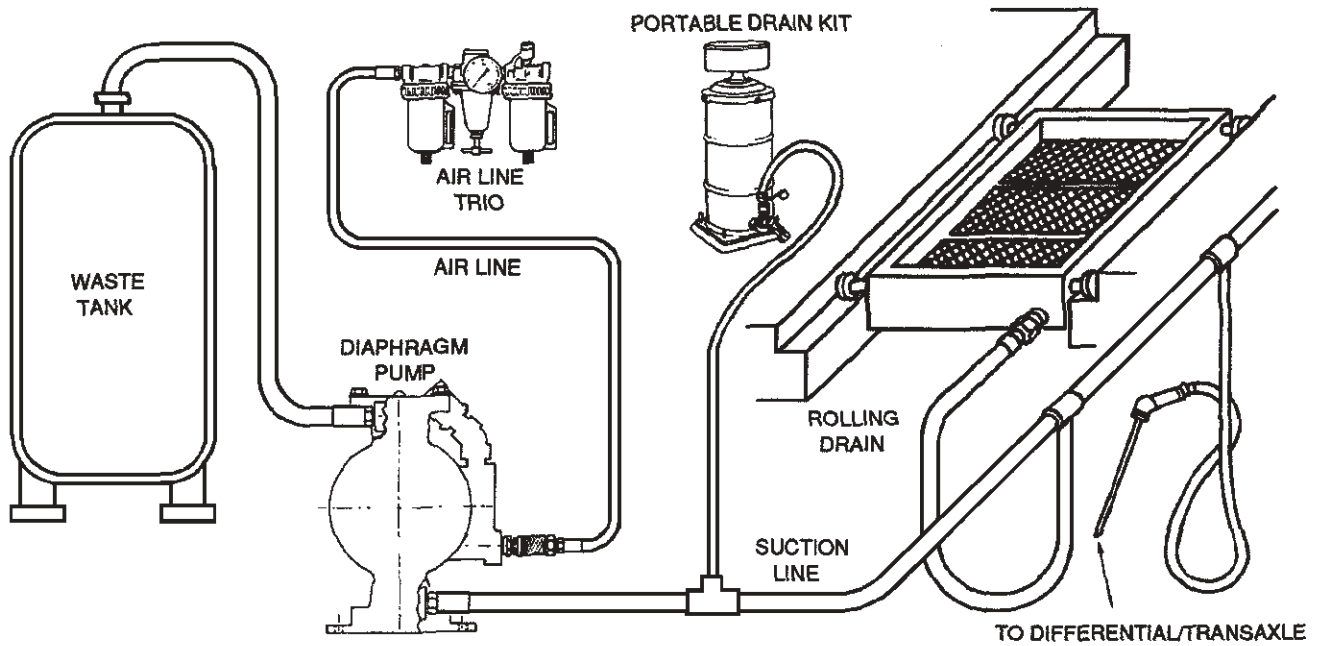
To reduce the risk of static electrical sparking, the system must be grounded. Refer to your local, state, federal electrical codes for detailed grounding instructions that are applicable to your area and type of equipment.

WARNING

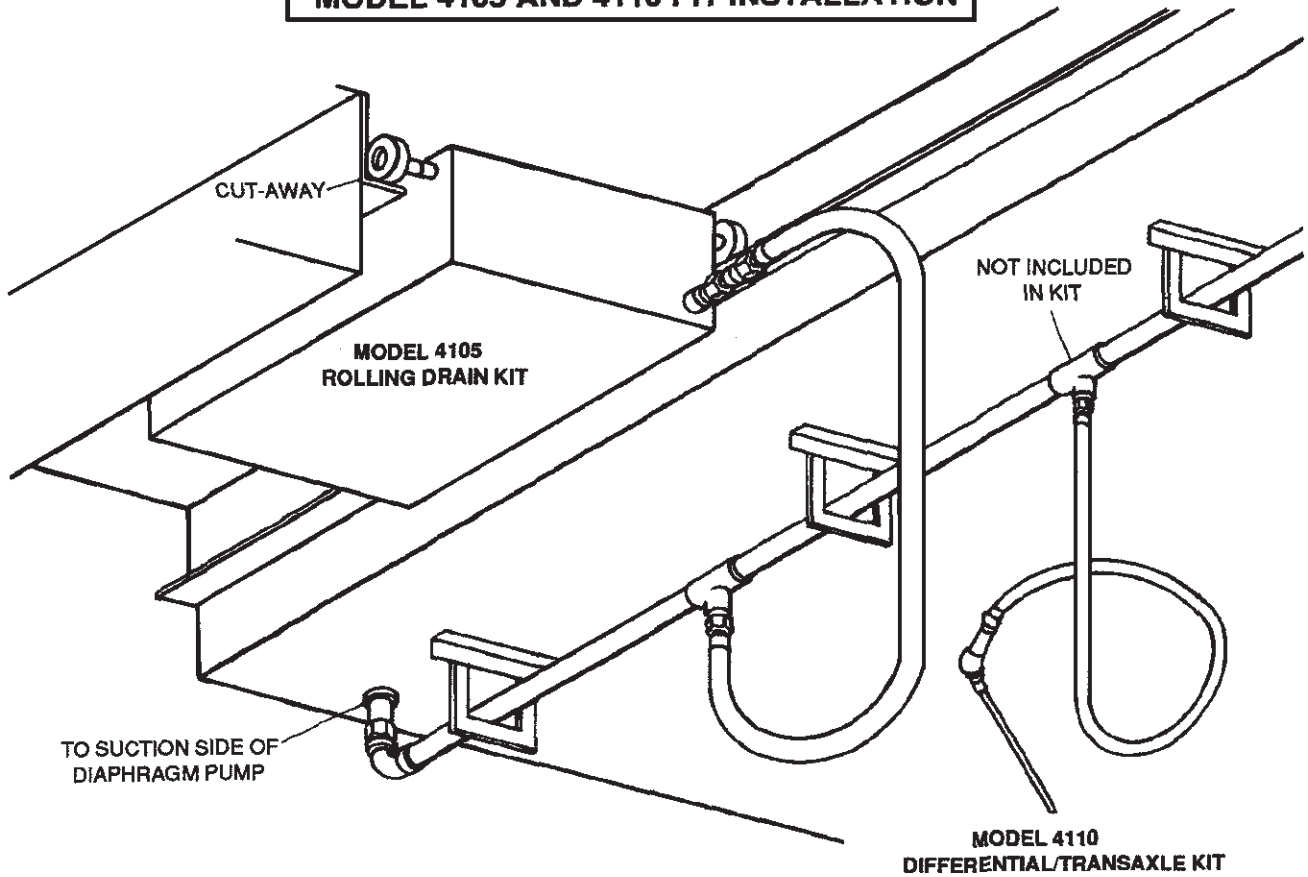
FAILURE TO HEED THE FOLLOWING WARNINGS INCLUDING FAILURE TO GROUND EQUIPMENT, MISUSE, OVER PRESSURIZING, MODIFYING PARTS, EVACUATING INCOMPATIBLE FLUIDS, OR USING WORN OR DAMAGED PARTS, MAY RESULT IN EQUIPMENT DAMAGE AND/OR SERIOUS PERSONAL INJURY, FIRE, EXPLOSION, OR PROPERTY DAMAGE.

- Make sure the pump and all other equipment used or located in the pumping area are grounded.
- Do not use the system if any static sparking or electrical shock occurs. Stop the evacuation immediately and do not use the system until the problem is corrected.
- Do not exceed the stated maximum working pressure of the pump or of the lowest rated component in your system. Do not alter or modify any part of this equipment.
- Do not attempt to repair or disassemble the equipment while the system is operating.
- Make sure all connections are securely tightened before using this equipment.
- Always read and follow the fluid manufacturer's recommendations regarding fluid compatibility, and the use of protective clothing and equipment.
- Check all equipment regularly and repair or replace worn or damaged parts immediately.
- Never place your hand on or near the pump suction inlet.

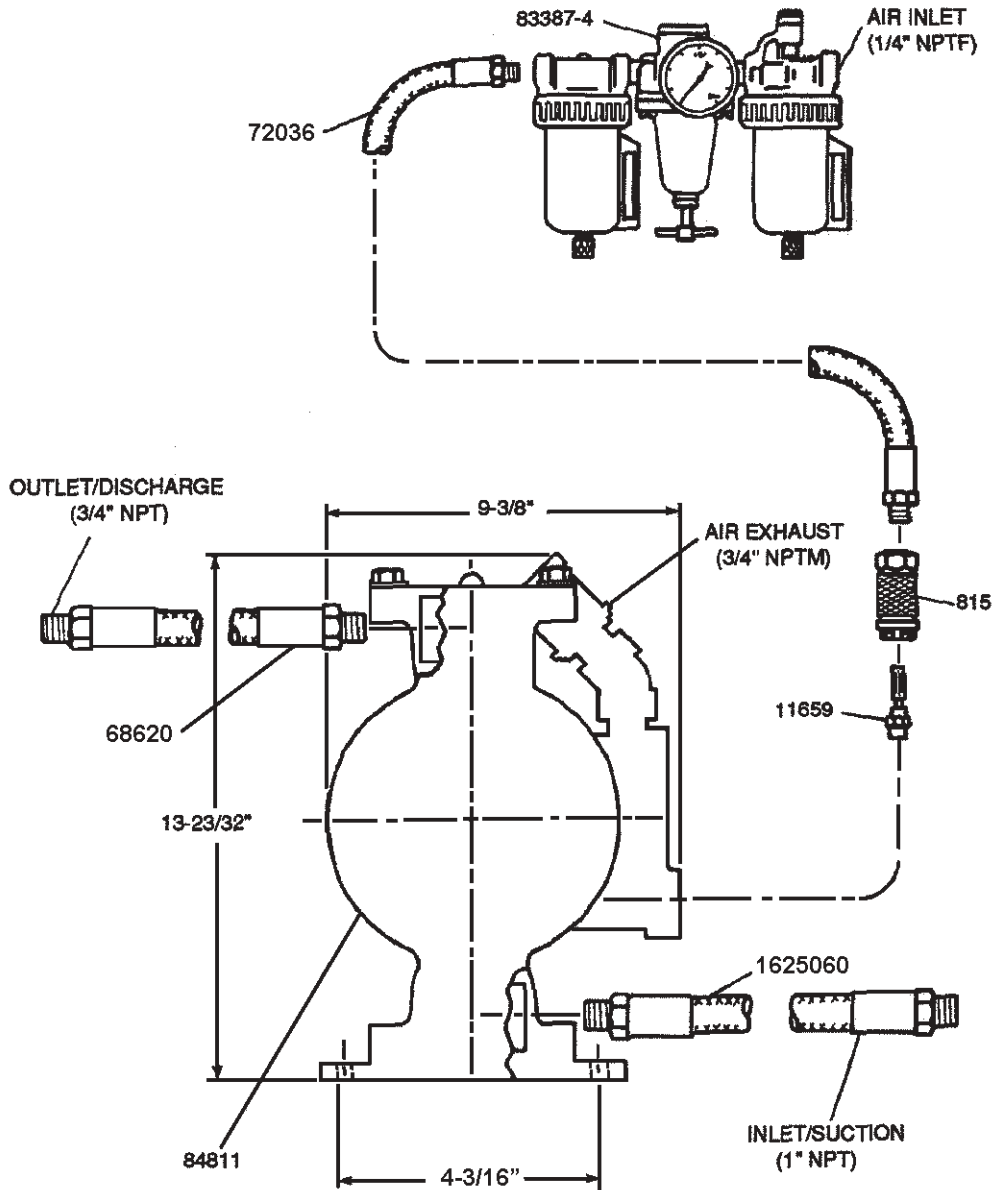
**MODEL 4100 BASIC FLUID EVACUATION SYSTEM
INSTALLATION WITH MODEL 4105 AND 4110 KITS**



MODEL 4105 AND 4110 PIT INSTALLATION

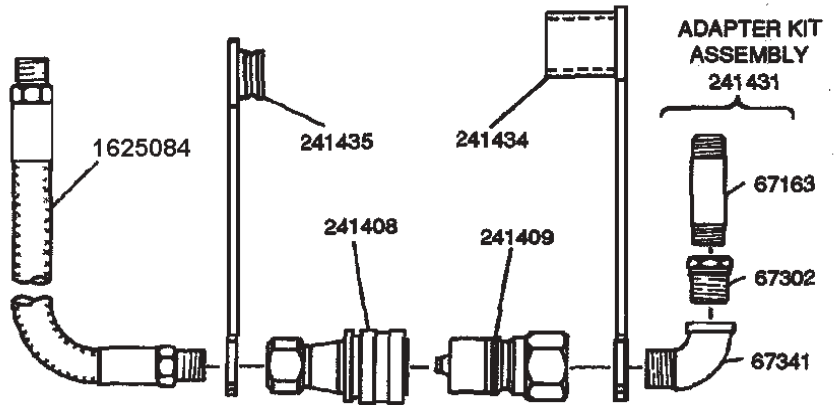
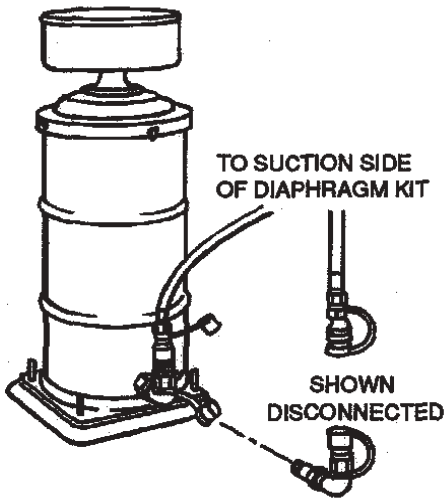


MODEL 4100 BASIC FLUID EVACUATION SYSTEM



PART	QTY	DESCRIPTION
815	1	Coupler
11659	1	Nipple
67153*	1	3/4" Coupler
68620	1	Hose assembly
72036	1	Air line hose
83387-4	1	Air line trio
84811	1	1" Diaphragm pump
248413*	1	1" Coupler
1625060	1	Hose assembly

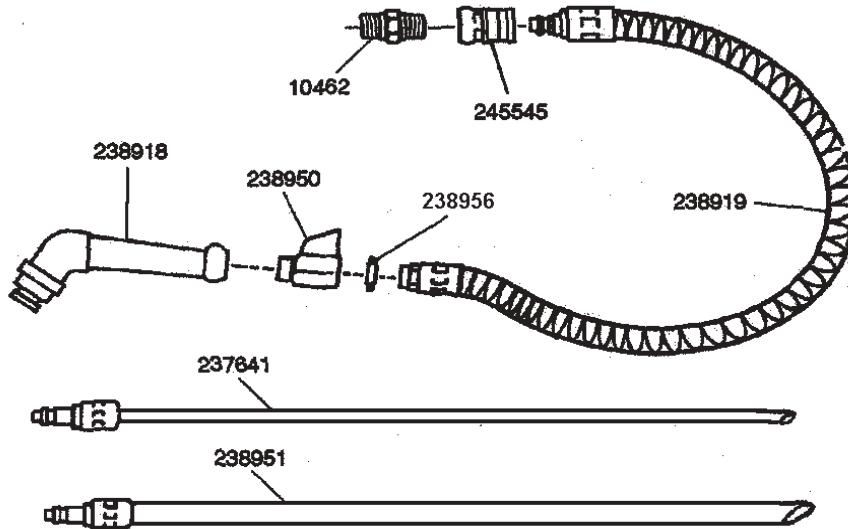
* Not shown on drawing.



**MODEL 4105
PORTABLE DRAIN KIT**

PART	QTY	DESCRIPTION
67163	1	Outlet nipple
67302	1	Reducer bushing
67341	1	1" Street elbow
241408	1	Fluid coupler
241409	1	Fluid nipple
241434	1	Dust cap
241435	1	Dust plug
241431*	1	Adapter kit assembly
1625084	1	Hose assembly

* Required for adaptation to Model 3604 Roll Around Drain.



**MODEL 4110
DIFFERENTIAL TRANSAXLE KIT**

PART	QTY	DESCRIPTION
10462	1	Nipple
237641	1	5/16" Bendable wand
238918	1	Quick connect probe handle
238919	1	Suction hose assembly
245545	1	Coupler
238950	1	Ball valve
238951	1	1/2" Bendable wand
238956	1	Sealing washer

Lincoln Industrial Standard Warranty

LIMITED WARRANTY

Lincoln warrants the equipment manufactured and supplied by Lincoln to be free from defects in material and workmanship for a period of one (1) year following the date of purchase, excluding there from any special, extended, or limited warranty published by Lincoln. If equipment is determined to be defective during this warranty period, it will be repaired or replaced, within Lincoln's sole discretion, without charge.

This warranty is conditioned upon the determination of a Lincoln authorized representative that the equipment is defective. To obtain repair or replacement, you must ship the equipment, transportation charges prepaid, with proof of purchase to a Lincoln Authorized Warranty and Service Center within the warranty period.

This warranty is extended to the original retail purchaser only. This warranty does not apply to equipment damaged from accident, overload, abuse, misuse, negligence, faulty installation or abrasive or corrosive material, equipment that has been altered, or equipment repaired by anyone not authorized by Lincoln. This warranty applies only to equipment installed, operated and maintained in strict accordance with the written specifications and recommendations provided by Lincoln or its authorized field personnel.

THIS WARRANTY IS EXCLUSIVE AND IS IN LIEU OF ANY OTHER WARRANTIES, EXPRESS OR IMPLIED, INCLUDING, BUT NOT LIMITED TO, THE WARRANTY OF MERCHANTABILITY OR WARRANTY OF FITNESS FOR A PARTICULAR PURPOSE.

In no event shall Lincoln be liable for incidental or consequential damages. Lincoln's liability for any claim for loss or damages arising out of the sale, resale or use of any Lincoln equipment shall in no event exceed the purchase price. Some jurisdictions do not allow the exclusion or limitation of incidental or consequential damages, therefore the above limitation or exclusion may not apply to you.

This warranty gives you specific legal rights. You may also have other rights that vary by jurisdiction.

Customers not located in the Western Hemisphere or East Asia: Please contact Lincoln GmbH & Co. KG, Walldorf, Germany, for your warranty rights.

SPECIAL LIMITED 5 YEAR WARRANTY

Series 20, 25, 40 Bare Pumps, Heavy Duty and 87000 Series Bare Reels

Lincoln warrants series 20, 25, 40 bare pumps, and Heavy Duty and 87000 series (87300, 87500, 87700) bare reels to be free from defects in material and workmanship for five (5) years following the date of purchase. If equipment is determined by Lincoln, in its sole discretion, to be defective during the first year of the warranty period, it will be repaired or replaced at Lincoln's discretion, without charge. In years two (2) and three (3), the warranty on this equipment is limited to repair with Lincoln paying parts and labor only. In years four (4) and five (5), the warranty on this equipment is limited to repair with Lincoln paying for parts only.

Lincoln Industrial Contact Information

To find Lincoln Industrial's Nearest Service Center call the following number, you may also use our website

Customer Service	314-679-4200
Website	www.lincolnindustrial.com