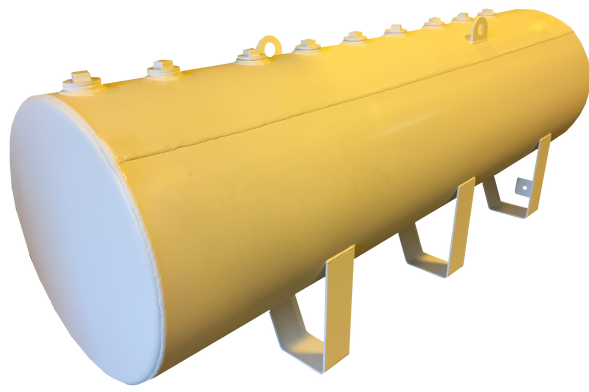


**NYC PRIMARY HEADER PIPE**



**NYC PRIMARY HEADER PIPE W/ CONTAINMENT**



TOTAL GENERATOR (kW)	FUEL CONSUMPTION - FULL LOAD (GPH)	HEADER MAX CAPACITY (Gal.)*	(A) PRIMARY PIPE DIAMETER (IN.)	(D) CONTAINMENT PIPE DIAMETER (IN.)	(B) PRIMARY PIPE LENGTH (IN.)	(C) CONTAINMENT PIPE LENGTH (IN.)	SCHEDULE 40 WALL THICKNESS**	APPROX. WEIGHT OF PIPE (LBs.)	APPROX. WEIGHT OF PIPE WITH FUEL (LBs.)
100	7.4	22.2	10	14	48	54	0.365	332	509
200	14.4	43.2	12	16	88 1/2	94 1/2	0.406	715	1061
			16	20	58	64	0.500	715	1061
300	21.5	64.5	16	20	86	92	0.500	927	1443
			20	24	62	68	0.594	968	1484
400-500	35.7	100	16	20	132 1/2	138 1/2	0.500	1275	2075
			20	24	91 1/2	97 1/2	0.594	1291	2091
600-750	53.4	150	20	24	133	139	0.594	1743	2943
			24	28	98	104	0.688	1770	2970
1000	71.1	200	24	28	127	133	0.688	2203	3803
			32	36	78 1/2	84 1/2	0.688	1892	3492
1250	88.8	250	24	28	155 1/2	161 1/2	0.688	2627	4627
			32	36	94	100	0.688	2198	4198
1500+	106.5	330	24	28	201 1/2	207 1/2	0.688	3308	5948
			32	36	119	125	0.688	2696	5336



**General Notes:**

\*Capacity is sized based on Section 1305.9.12 of the NYC Mechanical Code that limits piping diameters not to exceed three times the maximum firing rate as calculated by the engineer or architect. Capacity must also comply with the maximum permitted oil storage per storage, as provided for in Section 1305.11.1.3.

\*\*Oil lines shall be steel pipe ASTM A53 or ASTM A106 grade B seamless Schedule 40.



**Location & Contact**

Washington DC (headquarters):  
620 Herndon Parkway Suite 120  
Herndon VA 20170  
Phone: 800.628.5502

New York  
1141 River Road  
Selkirk, NY 12158  
Phone: 518.635.4343

Project Name and Address:

NYC RESERVOIR CONFIGURATOR

THIS DOCUMENT IS THE PROPERTY OF PETROPANELS.COM AND CORE ENGINEERED SOLUTIONS. DO NOT REPRODUCE, FURNISH TO OTHERS, OR USE FOR OTHER THAN PURPOSE INTENDED WITHOUT EXPRESS WRITTEN CONSENT OF PETROPANELS.COM AND CORE ENGINEERED SOLUTIONS. ALL WHOSE RIGHTS ARE HEREIN RESERVED.



Date: 11/28/17  
Rev: 012  
NOT TO SCALE  
Drawing: NYC HEADER CFG R012

Sheet #  
**D01**

File Name : NYC HEADER CFG R012.dwg  
Created Date : March 29, 2016  
Plot Date : 11/28/2017 12:22:24 PM  
Plot By : www.petropanels.com/Mark.Mechanic  
Paper size : ANSI B (11.00 x 17.00 Inches)  
Plot Scale : 1" = 1604.00'