

INNER DESIGN DATA	
CAPACITY	- TO BE DETERMINED
TYPE	- SINGLE WALL
NO. REQ.	--
TANK MATERIAL	- MILD CARBON STEEL
SPECIFIC GRAVITY	= 1.0
THICKNESS - INNER	: 5/16"
CONSTRUCTION	- LAP WELD OUTSIDE ONLY
TANK TEST	- 25 PSIG HYDROTEST
INT. FINISH	- NONE
LABEL - NYC APPROVED TANK W/ 200% COVERED RUPTURE IN ACCORDANCE WITH THE ALTERNATE TANK DESIGN AND CONSTRUCTION STANDARDS OF SECTION 1305.14 OF THE MECHANICAL CODE.	
OUTER DESIGN DATA	
CAPACITY	- TO BE DETERMINED
OPERATING PRESSURE	- ATMOSPHERIC
SPECIFIC GRAVITY	= 1.0
TANK MATERIAL	- MILD CARBON STEEL
THICKNESS	- 10 GAUGE
CONSTRUCTION	- LAP WELD OUTSIDE ONLY OPEN TO ATMOSPHERE
TANK TEST	- WATERTIGHT
EXTERIOR FINISH	- SP6 BLAST, WHITE URETHANE FINISH
LABEL	- NONE
TANK SUPPORT	- 10 GA x 4" WIDE x 2" DEEP PRESSBRAKE "U" PATTERN

- NOTE:
- 1) ALL PRIMARY TANK WELD JOINTS SHALL BE IN ACCORDANCE WITH ALTERNATE TANK DESIGN AND CONSTRUCTION STANDARDS OF SECTION 1350.14 OF THE MECHANICAL CODE.
 - 2) STRUCTURAL MEMBERS TO BE STITCH WELDED 2" IN 12" MINIMUM. (SPACING ON 15" CENTERS)
 - 3) PRIMARY TOP TO BE PLUG WELDED TO STRUCTURAL MEMBERS. HOLE SIZE = 1-1/4" x 3/4" FULLY WELDED ON 7" CENTERS MINIMUM.

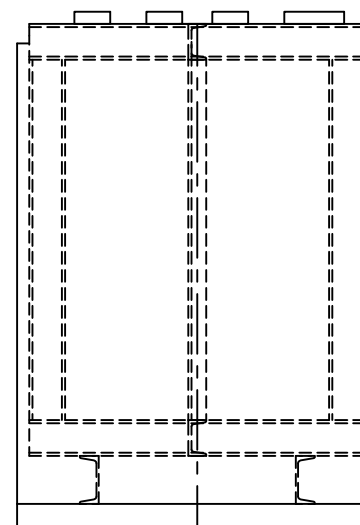
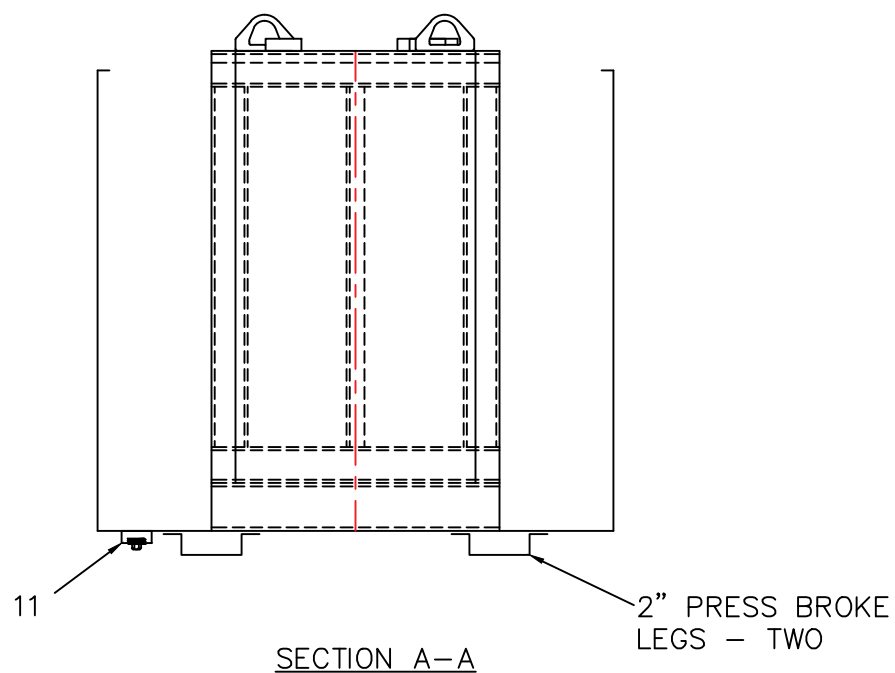
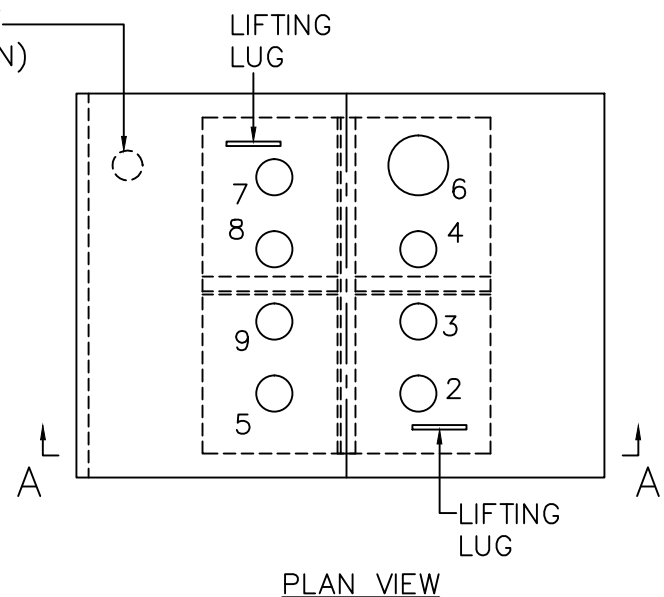
NYC SW BASE TANK & BASIN
w/ CLOSED TOP RUPTURE BASIN

CUSTOMER:	
PROJECT:	
QUOTE NO.:	CHK'D BY:
SCALE:	DATE:
DWG. BY:	DWG. NO.:

LEGEND

1	2" SCH 40 MILD CARBON STEEL PIPE w/ 90° LONG RADIUS WELD ELBOW & 2" THREADED PIPE (RETURN)	5	2" FNPT FITTING (SPARE)	9	2" FNPT FITTING (MECHANICAL LEVEL GAUGE)
2	2" FNPT FITTING (FOS)	6	4" FNPT FITTING (SPARE)	10	2" FNPT FITTING (RUPTURE BASIN ALARM)
3	2" FNPT FITTING (VENT TO BASEMENT)	7	2" FNPT FITTING (GENERATOR SUPPLY)	11	2" FNPT FITTING W/ PLUG (DIKE DRAIN)
4	2" FNPT FITTING (LEVEL TRANSMITTER USE)	8	2" FNPT FITTING (GENERATOR RETURN)		

11 - BOTTOM OF
DIKE ONLY (DRAIN)



INNER DESIGN DATA

CAPACITY - TO BE DETERMINED
TYPE - SINGLE WALL
NO. REQ. --
TANK MATERIAL - MILD CARBON STEEL
SPECIFIC GRAVITY = 1.0
THICKNESS - INNER: 5/16"
CONSTRUCTION - LAP WELD OUTSIDE ONLY
TANK TEST - 25 PSIG HYDROTEST
INT. FINISH - NONE
LABEL - NYC APPROVED TANK W/ 200% COVERED RUPTURE IN ACCORDANCE WITH THE ALTERNATE TANK DESIGN AND CONSTRUCTION STANDARDS OF SECTION 1305.14 OF THE MECHANICAL CODE.

OUTER DESIGN DATA

CAPACITY - TO BE DETERMINED
OPERATING PRESSURE - ATMOSPHERIC
SPECIFIC GRAVITY = 1.0
TANK MATERIAL - MILD CARBON STEEL
THICKNESS - 10 GAUGE
CONSTRUCTION - LAP WELD OUTSIDE ONLY OPEN TO ATMOSPHERE
TANK TEST - WATERTIGHT
EXTERIOR FINISH - SP6 BLAST, WHITE URETHANE FINISH
LABEL - NONE
TANK SUPPORT - 10 GA x 4" WIDE x 2" DEEP PRESSBRAKE "U" PATTERN

NOTE:

- 1) ALL PRIMARY TANK WELD JOINTS SHALL BE IN ACCORDANCE WITH ALTERNATE TANK DESIGN AND CONSTRUCTION STANDARDS OF SECTION 1350.14 OF THE MECHANICAL CODE.
- 2) STRUCTURAL MEMBERS TO BE STITCH WELDED 2" IN 12" MINIMUM. (SPACING ON 15" CENTERS)
- 3) PRIMARY TOP TO BE PLUG WELDED TO STRUCTURAL MEMBERS. HOLE SIZE = 1-1/4" x 3/4" FULLY WELDED ON 7" CENTERS MINIMUM.

NYC SW BASE TANK & BASIN
w/ OPEN TOP RUPTURE BASIN

CUSTOMER:			
PROJECT:			
QUOTE NO:			
SCALE:	DATE:	DWG. BY:	CHK'D BY:
			DWG. NO.:

LEGEND

1	NOT USED	5	2" FNPT FITTING (SPARE)	9	2" FNPT FITTING (MECHANICAL LEVEL GAUGE)
2	2" FNPT FITTING (FOS)	6	4" FNPT FITTING (SPARE)	10	NOT USED
3	2" FNPT FITTING (VENT TO BASEMENT)	7	2" FNPT FITTING (GENERATOR SUPPLY)	11	2" FNPT FITTING W/ PLUG (DIKE DRAIN)
4	2" FNPT FITTING (LEVEL TRANSMITTER USE)	8	2" FNPT FITTING (GENERATOR RETURN)		