

SECTION SCHEDULE

SECTION	REQD	WT. (TONS)	CU. YDS
VAULT TOP	1	28.79	14.22
VAULT BASE	1	30.28	14.96
RISER 1	1	1.67	0.83
RISER 2	1	0.99	0.49
RISER 3	1	1.34	0.66
RISER 4	1	1.17	0.58
RISER 5	1	1.00	0.50

BILL OF MATERIALS

QTY	DESCRIPTION	ITEM #	PLANT/FIELD
319 LF	1" x 1 1/2" CS-440 w/ CS-50 PRIMER	15416750	FIELD
100 LF	12" CS-212 JOINT WRAP w/ CS-50 PRIMER	15416900	FIELD
1	HALLIDAY L1B LADDER x 12'-0"	-	FIELD
1	HALLIDAY L1B LADDER x 11'-0"	-	FIELD
2	HALLIDAY L1E LADDER EXTENSION	-	FIELD
1	1"Ø GALV. THRD FEMALE COUPLING w/ WATERSTOP. SEE DETAIL #1	-	PLANT
6	8"Ø PSX DIRECT DRIVE BOOT - "8QRS"	14292100	PLANT
2	12"Ø PSX DIRECT DRIVE BOOT - "12M"	14292500	PLANT
1	24" FIBERLITE MANWAY	-	PLANT
4	36" FIBERLITE MANWAY	-	PLANT
2276 SF	KARNAK #83-AF DAMPPROOFING	15111300	PLANT
1 GAL.	KARNAK #83-AF DAMPPROOFING	15111300	FIELD
1230 SF	THORO-COAT WATERPROOFING - WHITE	15111100	PLANT
1325 SF	SHELL-COAT EPOXY COATING	15111000	PLANT
10	1"Ø DAYTON F-57 THRD INSERT	15420300	PLANT
10	1"Ø BOLTS & WASHERS x 3 1/2" LG.	15404900	PLANT
1	KILLARK EXP. PROOF LIGHT - EM115B2G	14003000	PLANT
2	CROUSE-HINDS EXP. PROOF SW. - EDSC21271	14003010	PLANT
156	3/4"Ø AMIFAST P56T THRD INSERTS	15423600	PLANT
156	3/4"Ø x 31" LG. B7 ALL THREAD - BLACK	15403440	FIELD
12	#4 BAR x 31'-8" LG. - MK B401	15104200	FIELD
12	#4 BAR x 16'-6" LG. - MK B401	15104200	FIELD
8	8 TON MB DOGBONE LIFTING EYE	-	FIELD

NOTE: ITEMS LABELED AS "SP-X" DENOTES SPECIAL ITEM

NOTES:

- ALL EXTERIOR WALLS AND FLOOR TO RECEIVE (2) COATS OF KARNAK #83-AF. (DO NOT COAT KEYS OR RIDGES)
- INTERIOR SURFACES OF TOP SECTION TO RECEIVE (2) COATS OF THORO-COAT (WHITE).
- INTERIOR SURFACES OF BASE SECTION TO RECEIVE (2) COATS OF SHELL-COAT II
- SETTING BURKS TO BE FILLED WITH NON-SHRINK GROUT AND COATED WITH KARNAK DAMPPROOFING AFTER INSTALLATION (BY OTHERS)
- FUEL VAULT IS IN ACCORDANCE WITH 2245
- STEEL TANK IS IN ACCORDANCE WITH 142
- COMPLIANT WITH NFPA 30 2008, CHAPTER 25.

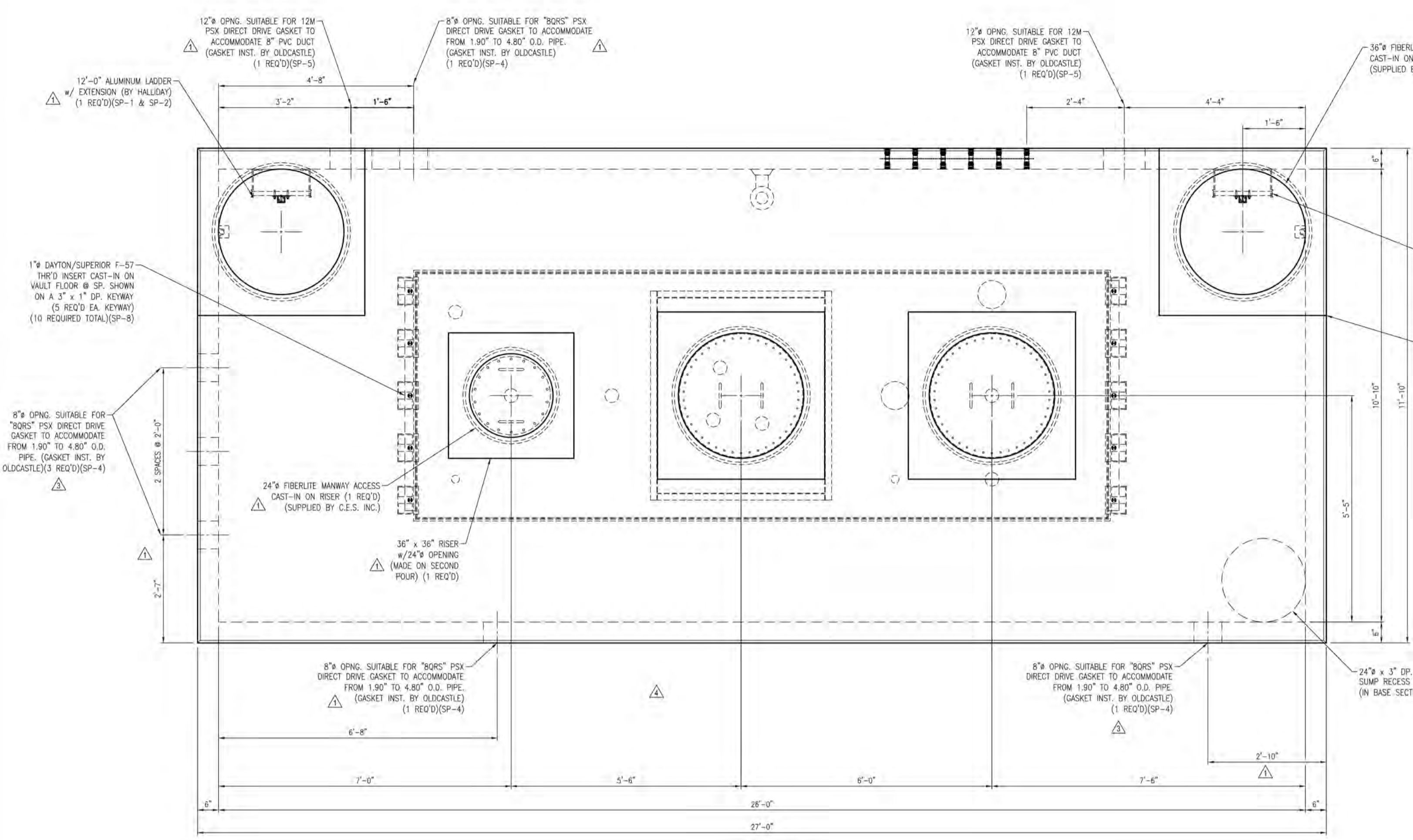
GASKET APPLICATION PROCEDURE:

- JOINT SURFACES TO BE CLEAN OF DEBRIS PRIOR TO GASKET PLACEMENT.
- GASKET TO BE PLACED AT MIDPOINT OF FLAT EXTERIOR SURFACE. (SEE DETAIL)
- IF GASKET IS RECTANGULAR, LARGER DIMENSION OF GASKET TO BE PLACED VERTICAL.
- GASKET TO BE LAPPED A MINIMUM OF 3" & KNEADED TOGETHER TO FORM A CONTINUOUS LOOP.
- STACKED GASKET MUST BE KNEADED TOGETHER TO ENSURE PROPER ADHESION PER MFG. RECOMMENDATIONS.

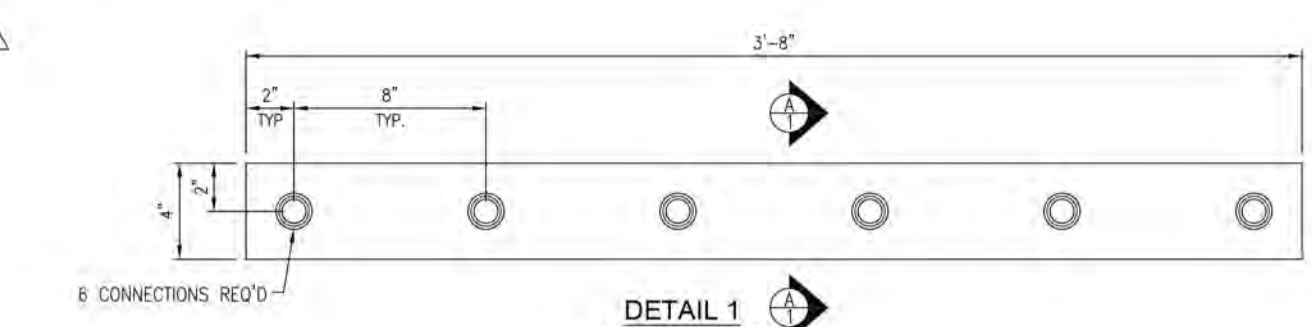
DESIGN NOTES

CONCRETE MINIMUM STRENGTH - 5,000 PSI @ 28 DAYS
 STEEL REINFORCEMENT - ASTM A-615, GRADE 60
 COVER TO STEEL: AS NOTED IN REINFORCEMENT SECTION
 FILL RANGE = @ GRADE
 DESIGN LOADING - AASHTO HS20-44
 SECTION JOINT - SEE DETAIL
 DESIGN SPECIFICATION - ACI 318 # AASHTO LOAD FACTOR DESIGN METHOD

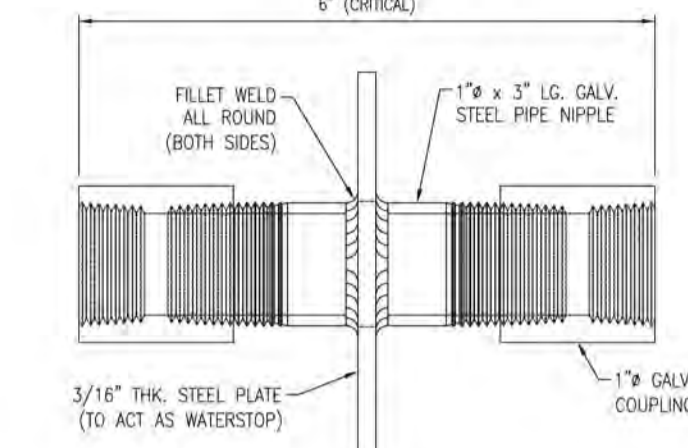
ASSUMPTIONS
 GROUND WATER @ GRADE
 2'-0" LIVE LOAD SURCHARGE APPLIED TO 8'-0" DEPTH
 LIVE LOAD IMPACT 0" TO 1'-0" COVER I = 30%
 COEFFICIENT OF ACTIVE EARTH PRESSURE $K_a = 0.33$
 DRY EARTH DENSITY = 120 PCF
 DRY EARTH LATERAL PRESSURE = 120 (0.33) = 39.6 PSF
 SATURATED EARTH DENSITY = 132 PCF
 132 PCF - 62.4 = 69.6 PCF
 69.6 PCF (0.33) = 23.0 PSF
 SATURATED EARTH LATERAL PRESSURE = 23.0 + 62.4 = 85.4 PSF



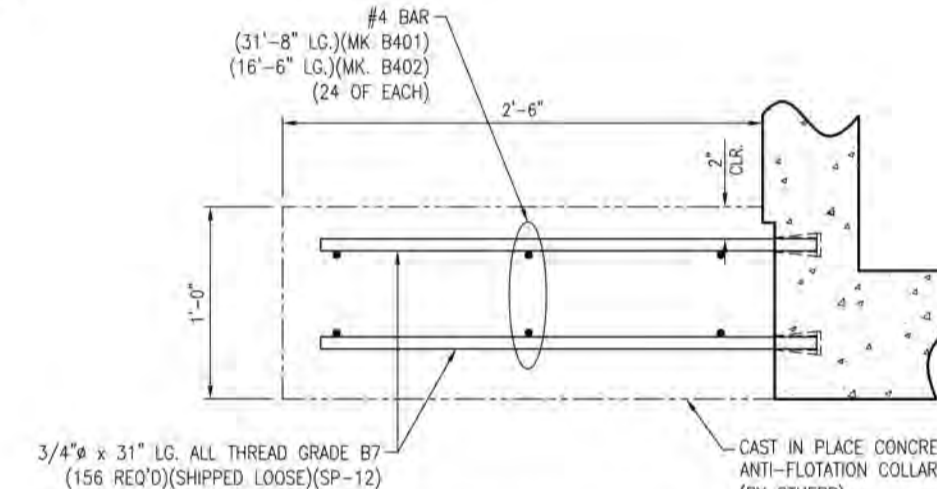
PLAN VIEW
SCALE: 1/2" = 1'-0"



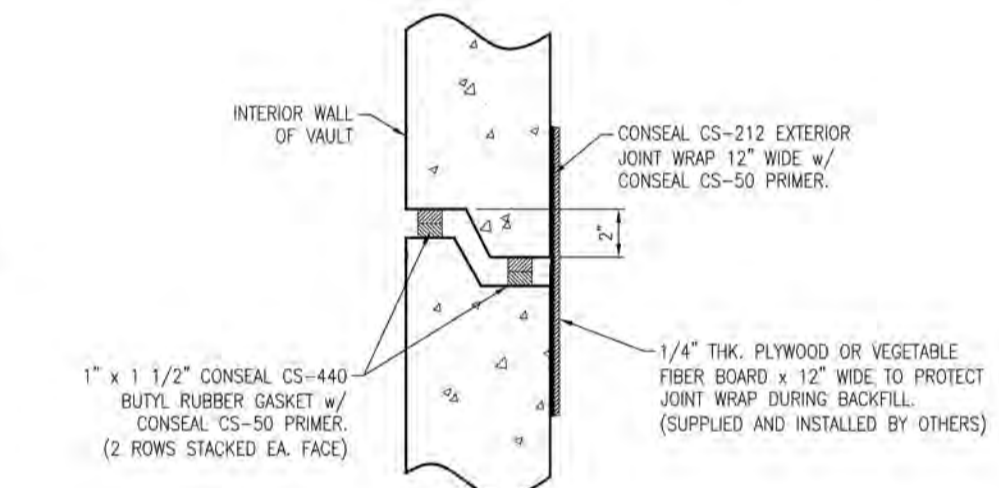
DETAIL 1
SCALE: 1 1/2" = 1'-0"



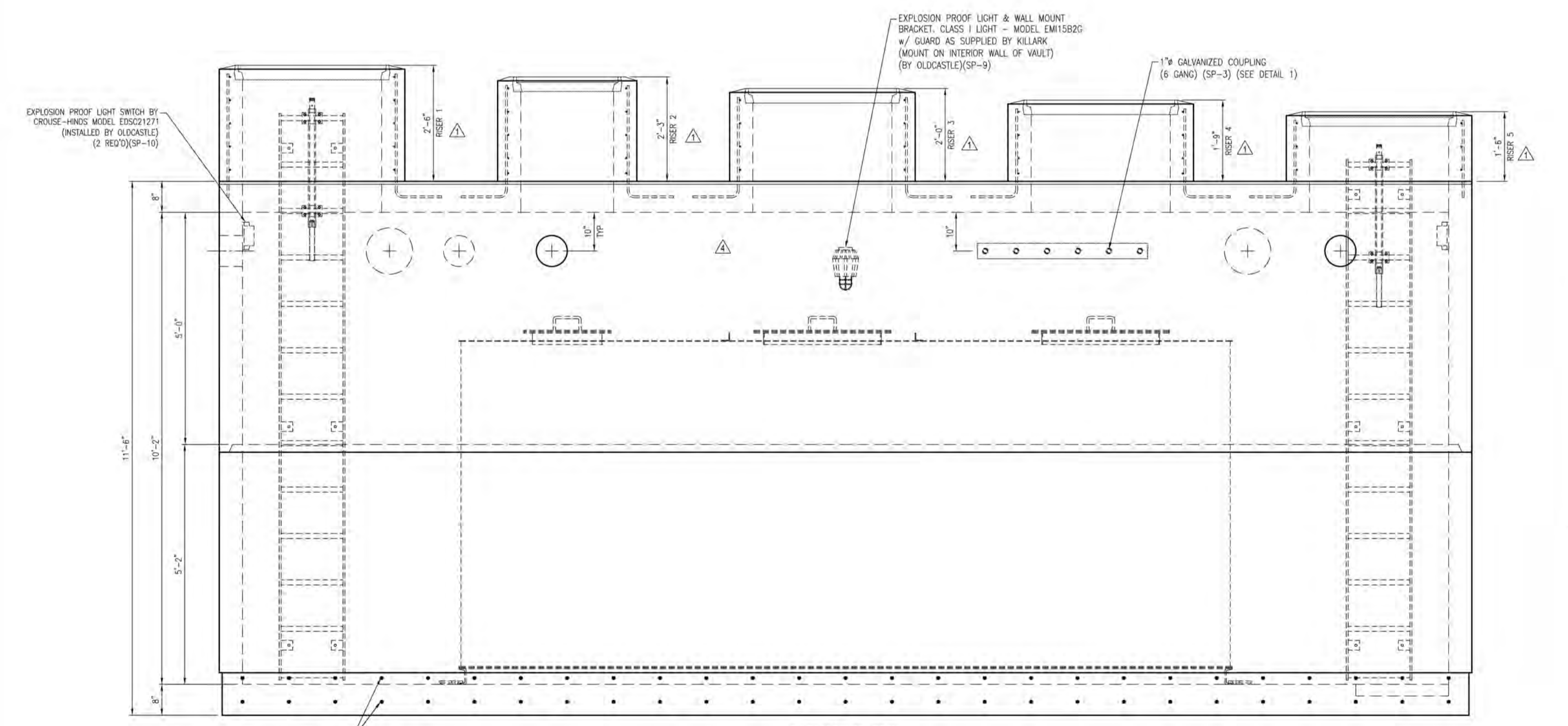
SECTION B-B
SCALE: 6" = 1'-0"



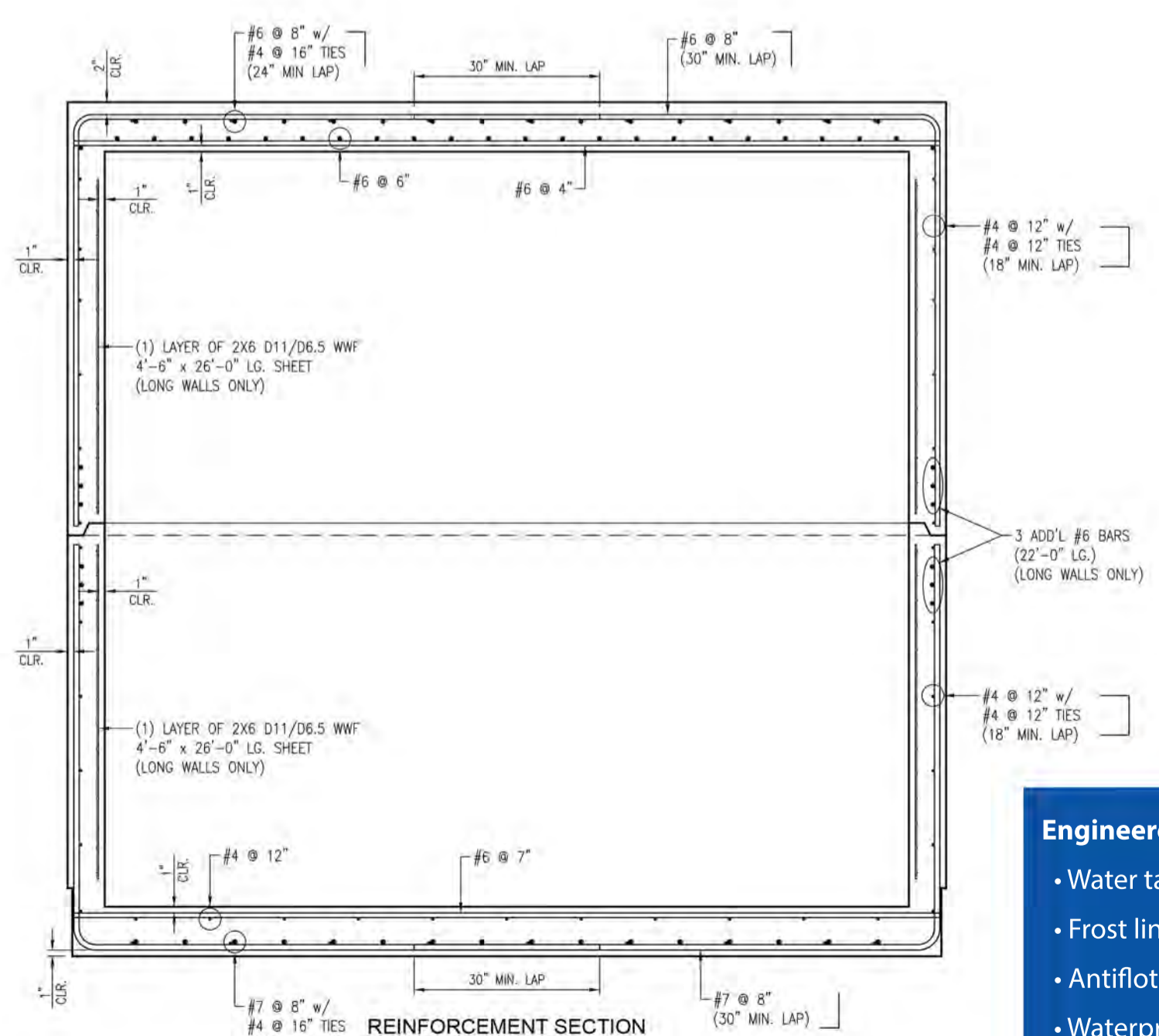
ANTI-FLOTATION COLLAR
SCALE: 1" = 1'-0"



TYPICAL JOINT DETAIL
SCALE: 1 1/2" = 1'-0"



ELEVATION VIEW
SCALE: 1/2" = 1'-0"



REINFORCEMENT SECTION
SCALE: 1/2" = 1'-0"

Engineered for Your Site considering:

- Water tables
- Frost line
- Antiflotation apron
- Waterproofing/damp proofing
- Seismic conditions
- Ventilation requirements



Core Engineered Solutions, Inc
 www.core-es.com
 800-628-5502

10'-10" x 26' FUEL VAULT
For Reference - Not for Construction

CUSTOMER				
CORE ENGINEERED SOLUTIONS				
DATE	SALES	DRAWN	ENGINEER	CHECKED
DRAWING NUMBER			REVISION	SHEET
				1 OF 1