

RD7CTS Remote Display

Programming Setup

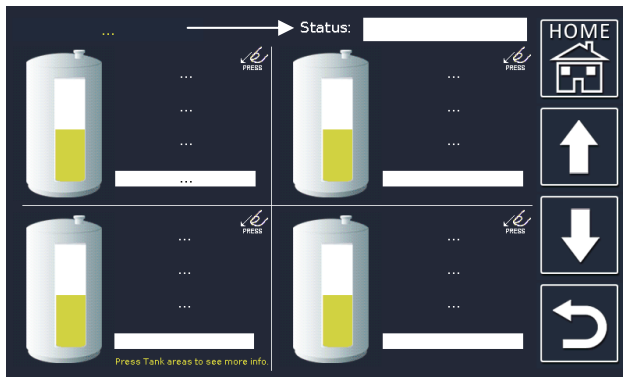
Powering On

For installation instructions refer to document DI00028 (PROTEUS RD7CTS Installation Instructions).

If ATG is an **OMNTEC** OEL8000II make sure OEL8000II's RS232 communication port is plugged into COMM3 or COMM2 (and programmed for **Remote Mode**).

RD7CTS default baud rate is **9600, 8 DATA BITS, NO PARITY, 1 STOP BIT**.

RD7CTS when powered on will display screen shown below.



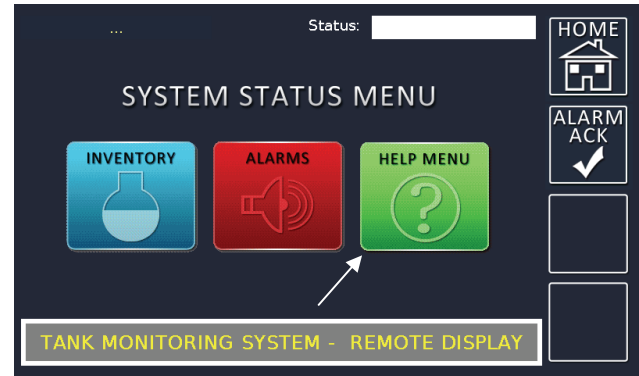
The Status box will display one of the following:

STATUS	DESCRIPTION
Normal	No alarm condition exists
Warning	Hi level warning exists
Alarm	Alarm condition exists
No Response	No communication to ATG

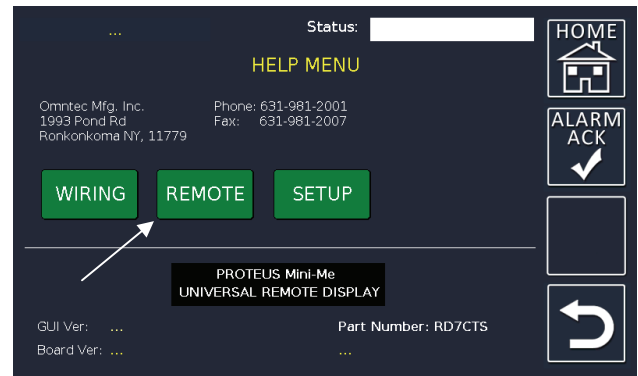
Tank Number, Label and Volume will be displayed if the unit is in **Normal, Warning, or Alarm** after a minute.

If **No Response** is shown check the wiring to ATG and baud rate settings (both ATG and PROTEUS RD7CTS baud rate setting must match).

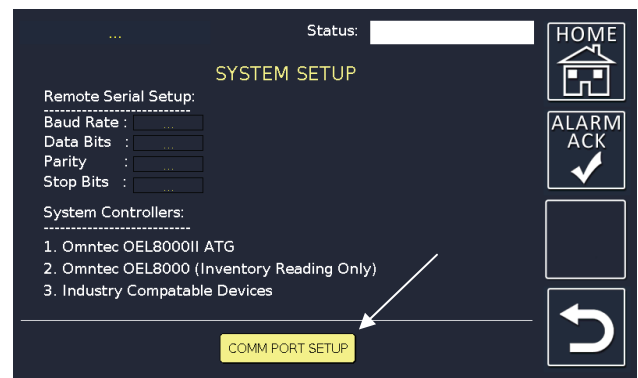
Changing Baud Rate, Parity, and Data Bits



1. In SYSTEM STATUS MENU press **HELP MENU** button.



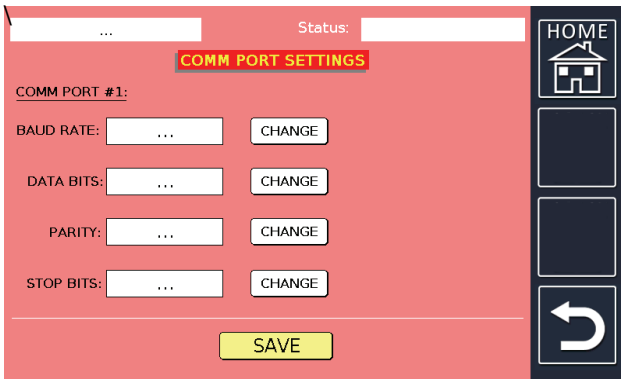
2. In HELP MENU press **REMOTE** button. Current RS232 settings (Baud Rate, Parity, Data Bits) are displayed on this screen shown below.



3. Press **COMM PORT SETUP** to change system settings.

RD7CTS Remote Display

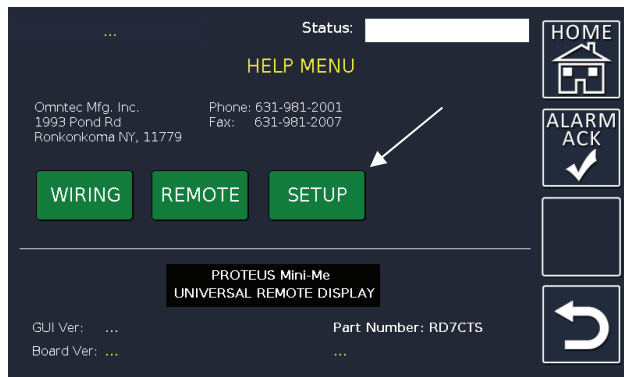
Programming Setup



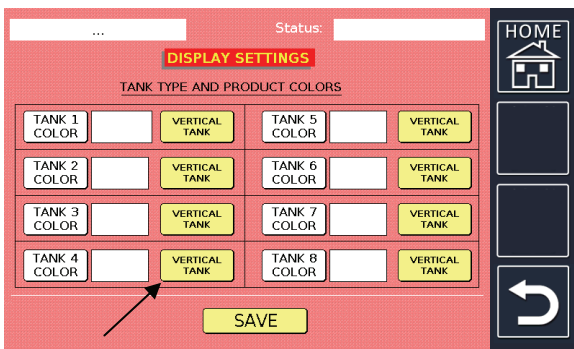
4. Press **CHANGE** buttons to set RS232 settings.

IMPORTANT ! Settings must match RS232 settings on ATG.

Changing Tank Display to Vertical or Horizontal



1. In **HELP** press **SETUP** button.

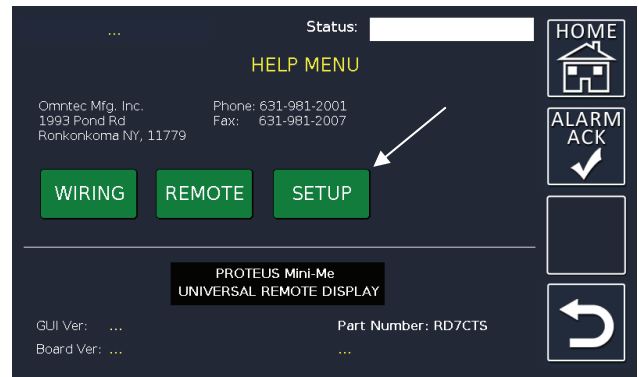


2. There are two tank types, **VERTICAL** and **HORIZONTAL**. This setting will change the tank picture on the **INVENTORY** page.

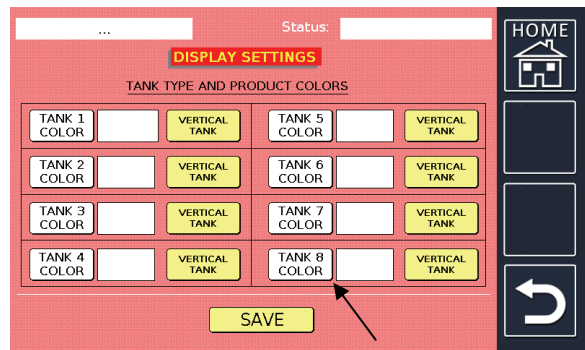
3. Press **yellow TANK** buttons to toggle the **VERTICAL** and **HORIZONTAL** selection
4. **IMPORTANT !** Press **SAVE** when finished.

Changing Tank Color

There are four colors to choose from for each tank, **YELLOW**, **GREEN**, **RED** and **BLUE**.



1. In **HELP MENU** press **SETUP** button.



2. Press **TANK # COLOR** buttons. The color bars will toggle 4 colors.
3. Change **TANKS 1** through **8** for different combinations and **PRESS SAVE**.